

**Michael Adams**



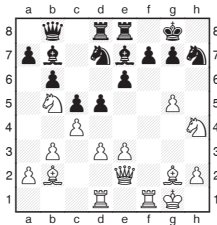
## Watch out for young Turks

The Turkish chess league is unique in my experience in that half the boards are restricted by category to young players of both sexes. This interesting concept must bode well for the long-term future of chess in that country, where the game already enjoys considerable government support, and which will welcome the return of the Chess Olympiad in 2012 only a dozen years after they last hosted the event.

Kf6xg6 22.Qb3-b4 Ne5-f3+ 23.Be2xf3 e4xf3 24.Rf1xf3 leaves Black in trouble, but still fighting.

### 21.Rf1xf5+

This devastating blow forced Black to resign as his king is rounded up after 21...Kf6xf5 22.Qb3-f7+ Bg7-f6 23.Be2-g4+ Kf5-e5 24.Qf7-e6 mate, or 22...Kf5-e5 23.Qf7-e7+ Ke5-f5 24.Ra1-f1+ Kf5-g6 25.Qe7-f7+ Kg6-h6 26.Qf7-h5 mate.



**Margvelashvili, G - Karakehajov, K**  
Konya 2010

With all his pieces poised to participate in the attack, White began dismantling black's kingside with:

### 19.Rf1xf7 Nd7-e5

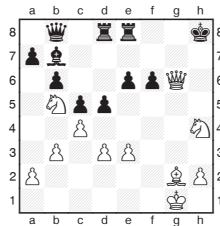
Blocking the diagonal is the only chance as 19...Kg8xf7 20.g5-g6+ Kf7-g8 21.g6xh7+ Kg8xh7 22.Qe2-h5+ Kh7-g8 23.Bb2xg7 leaves Black's monarch all alone.

### 20.g5-g6 Nh7-f6

Capturing the rook was a reasonable option, 20...Ne5xf7 21.g6xh7+ Kg8-h8 is met by the strong 22.Rd1-f1 targeting the key defender Black's knight. If 22...Nf7-h6 23.Bb2-e5 Qb8-c8 24.Qe2-h5 is decisive, but 22...Be7xh4 is harder to crack, although 23.Rf1xf7 e6-e5 24.Qe2-h5 Bh4-f6 25.Nb5-c7 Re8-f8 26.Nc7-e6 leaves Black in desperate straits.

**21.Rd1-f1 Ne5xf7**  
**22.g6xf7+ Kg8xf7**

**23.Qe2-h5+ Kf7-g8**  
**24.Bb2xf6 Be7xf6**  
**25.Rf1xf6 g7xf6**  
**26.Qh5-g6+ Kg8-h8**



### 27.Qg6-h6+

It is more elegant to play around the pawn, but 27.Qg6xf6+ Kh8-g8 28.Qf6-g6+ Kg8-h8 29.Qg6-f7 Re8-g8 30.Qf7-h5+ Kh8-g7 31.Qh5-g6+ Kg7-f8 32.Qg6-f6+ Kf8-e8 33.Qf6xe6+ Ke8-f8 34.Nh4-f5 also wins.

**27... Kh8-g8**  
**28.Nh4-g6 e6-e5**

After 28...f6-f5 29.Qh6-h8+ Kg8-f7 30.Ng6-e5+ Black must give up his queen as 30...Kf7-e7 31.Qh8-g7 is mate.

**29.Qh6-h8+ Kg8-f7**  
**30.Qh8-h7+ Kf7-e6**  
**31.c4xd5+**

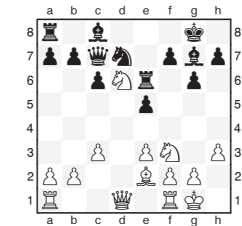
White misses the chance to crown his brilliant play with a stylish, but not easy to spot, mate: 31.Ng6-f4+ e5xf4 32.Bg2-h3+ f6-f5 33.Bh3xf5+ Ke6-e5 34.d3-d4+ c5xd4 35.e3xd4+ Ke5-f6 36.Qh7-g6+ Kf6-e7 37.Qg6-g7.

**31... Rd8xd5**  
If 31...Bb7xd5 the simple 32.Nb5-c7+ Ke6-d6 33.Nc7xd5 is good enough.

**32.Bg2xd5+ Bb7xd5**  
**33.Nb5-c7+ Ke6-d6**  
**34.Nc7xd5 Re8-g8**

There is no hope as 34...Kd6xd5 35.Qh7-d7+ Qb8-d6 36.e3-e4+ wins black's queen.

**35.Nd5xf6**  
**1-0**



**Karabayir, M - Yurtseven, M**  
Konya 2010

White is understandably attracted by the idea of drawing Black's king into the middle of the board.

**15.Nd6xf7 Kg8xf7**  
**16.Nf3-g5+ Kf7-e7**  
**17.Ng5xe6 Ke7xe6**  
**18.Qd1-b3+ Ke6-f6**

The king must go sideways as 18...Ke6-e7 19.Qb3-g8 creates havoc round the back.

### 19.f2-f4 e5-e4

Correctly trying to keep the 'f' file closed, although his opponent has other plans.

### 20.f4-f5 g6xf5

However, this is a mistake, 20...Nd7-e5 21.f5xg6+