

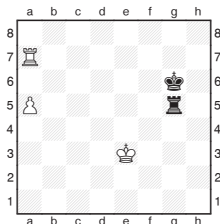
Michael Adams



Short on a hot streak in Bangkok

Nigel Short has been in lethal form this year, and he finished the outright victor of the Bangkok Open with an impressive 8/9.

Winning the game of the type below is key to tournament success, as he squeezes out a win after a lengthy fluctuating struggle.



N. Short - F. Amonatov
Bangkok 2012

Despite the reduced material, Black needs to play accurately to draw.

68... **Kg6-f6**

The simplest was 68...Rg5-f5 69.a5-a6 Rf5-f6, as 70.Ke3-d4 allows a series of checks beginning with 70...Rf6-f4+.

69.a5-a6 **Rg5-a5**

If Black's king makes a beeline for the passed pawn, he loses to a typical tactic: 69...Kf6-e6 70.Ra7-a8 Ke6-d7 71.a6-a7 Rg5-a5 72.Ra8-h8. However, he can still hang on with the only move 69...Rg5-d5 keeping White's king restricted 70.Ra7-h7 Rd5-a5 71.a6-a7 Ra5-a4 72.Ke3-d3 Kf6-e6 73.Kd3-c3 Ke6-d6 74.Kc3-b3 Ra4-a1 75.Kb3-b4 Kd6-c6 is just in time.

70.Ra7-a8
71.Ke3-d3
72.Kd3-c3
73.Ra8-a7+

A crucial check, forcing Black's king to a worse square. If 73.Kc3-b3 Rf4-f3+ and there is no good escape from the checks and after 73.Ra8-c8 Rf4-a4 74.Rc8-c6 (retracing his steps with 74.Rc8-a8 still wins) 74...Kg7-f7 75.Kc3-b3 Ra4-a1 76.Kb3-b4 Kf7-e7 77.Kb4-b5 Ke7-d7 Black's king is just in time.

73... **Kg7-g6**

It seems more logical to head towards the queenside although Black is just too late following 73...Kg7-f6 74.Kc3-b3 Rf4-f1 75.Ra7-h7 Rf1-a1 76.a6-a7 Kf6-e6 77.Kb3-b4 Ke6-d6 78.Kb4-b5 Ra1-b1+ 79.Kb5-a6 Rb1-a1+ 80.Ka6-b7 Ra1-b1+ 81.Kb7-c8 Rb1-a1 82.Kc8-b8 Ra1-b1+ 83.Rh7-b7.

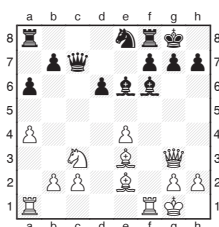
74.Ra7-b7 **Rf4-a4**
75.a6-a7 **Kg6-f6**

75...Kg6-h6 76.Kc3-b3 Ra4-a1 77.Kb3-c4 and White's king strolls to b8.

76.Kc3-b3 **Ra4-a1**
77.Kb3-c4 **Kf6-e6**
78.Kc4-c5

Black resigned as 78...Ra1-c1+ 79.Kc5-b6 Rc1-b1+ 80.Kb6-c7 Rb1-a1 81.Kc7-b8 forces promotion.

We finish with an interesting encounter from another Open held in warmer climes.



Y. Atabayev - L. Van Wely
Dubai 2012

Ra5-a4
Kf6-g7
Ra4-f4

17.Rf1xf6

As Black is doing very well, otherwise White throws in an exchange.

17... **Ne8xf6**
18.Be3-d4 **Nf6-e8**
19.Be2-d3

White continues positionally arguing his influential bishop is not worse than a rook.

19... **f7-f6**
20.Nc3-d5 **Be6xd5**
21.e4xd5 **g7-g6**

Now Atabayev comes up with a simple but effective plan to roll his queenside majority forward.

22.a4-a5 **Ne8-g7**
23.c2-c4 **Ra8-e8**
24.b2-b4 **Ng7-h5**
25.Qg3-f3 **f6-f5**
26.c4-c5 **Nh5-f6**

Loek tries to keep the position closed to control the bishops but it has taken a long time to coordinate his forces.

27.c5-c6 **Nf6-g4**
28.b4-b5 **a6xb5**
29.Bd3xb5 **Ng4-e5**
30.Qf3-b3 **Qc7-g7**
31.Ra1-d1 **Re8-e7**
32.Qb3-b4 **Qg7-f6**
33.c6xb7 **Re7xb7**
34.a5-a6 **Rb7-b8**

The key moment, if Black plays 34...Rb7-e7 35.a6-a7 Qf6-h4 he has good counterplay as 36.Qb4xd6 Qh4-g4 is fine for him. In the game he goes passive.

35.a6-a7 **Rb8-a8**
36.Bb5-c6 **Ne5xc6**
37.d5xc6 **Qf6-f7**
38.Qb4xd6 **Rf8-d8**
39.Qd6-e5 **Rd8xd4**
40.Qe5xd4 **Qf7xa7**
41.c6-c7

Black resigned, as 41...Qa7xc7 42.Qd4-d5+ wins his rook.