

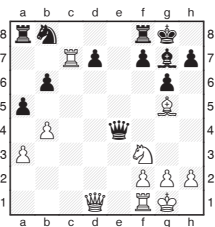
Michael Adams



Young and dangerous

It's no surprise that, without sponsorship, the British Championship is not as strong as last year at the top of the field. It is more worrying, however, that with only 11 2400+ participants, the top end of the field is noticeably weaker than the 2010 event – although the presence of Gawain Jones and David Howell will ensure a worthy winner.

More positively, some teenagers, including the winner of the game below, have collected notable scalps in the first week.



J. Holland - D. Eggleston
British Championship 2012

17.b4-b5

Very strong. Now Black will have severe difficulties completing development.

17... Qe4-f5

17...d7-d5 was a better try although Black's difficulties remain.

18.Qd1-b1 Qf5-e6

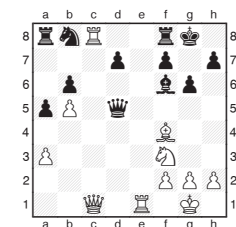
18...Qf5xb1 19.Rf1xb1 a5-a4 20.Bg5-e3 doesn't look healthy, but with the queens on, Black is effectively two pieces down.

19.Rf1-e1 Qe6-d6

20.Qb1-c1 Bg7-f6

21.Bg5-f4 Qd6-d5

22.Rc7-c8



22... Nb8-c6

Black must give up a piece as his king is hunted down after 22...h7-h5 23.Rc8xf8+ Kg8xf8 24.Bf4+h6+ Kf8-g8 25.Re1-e8+ Kg8-h7 26.Bh6-f8 or 22...Rf8xc8 23.Qc1xc8+ Kg8-g7 24.Re1-e8 h7-h5 25.h2-h4

23.Rc8xf8+ Ra8xf8

24.b5xc6 d7xc6

25.Bf4-c7 Qd5-b5

26.Bc7-e5 Bf6-e7

26...Bf6xe5 27.Nf3xe5 Rf8-e8 was the last try.

27.Qc1-h6 f7-f6

28.Nf3-g5

Winning even more material, Black could have called it a day here.

28... Rf8-f7

29.Ng5xf7 Be7-f8

30.Qh6-f4 f6xe5

31.Nf7xe5 Qb5-d5

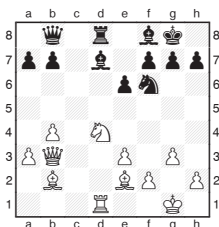
32.Ne5-g4 Bf8-e7

33.Ng4-f6+ Be7xf6

34.Qf4xf6 Qd5-d7

35.h2-h3

1-0



S. Conquest - J. Adair

British Championships 2012

24.b4-b5

Although the position looks balanced, this powerful strategic move, limiting the scope of Black's light-squared bishop gives him difficult problems to solve.

24... Bd7-e8

25.a3-a4 Nf6-d7

Black could have awaited developments with the useful 25...h7-h6.

26.Qb3-c2 Rd8-c8

27.Qc2-b1 Nd7-c5

28.Qb1-a1 Be8-d7

28...f7-f6 29.Be2-c4 Be8-f7 30.Qa1-a2 is unpleasant, 28...a7-a6 was better. Now that the Black pieces have focused on the queenside, Stuart smartly switches play back to the other side of the board, leaving Black's king feeling indisposed.

29.Nd4-f3 a7-a6

30.Nf3-g5

30.Qa1-b1 was also interesting.

30... a6xb5

Black should have played 30...h7-h6, although White is still pressing after 31.Ng5-e4 Nc5xe4 32.Rd1xd7 Ne4-c5 33.Rd7-d1 Qb8-c7.

31.Qa1-b1 g7-g6

32.a4xb5 Rc8-d8

Retreating the bishop was better, although 32...Bd7-e8 33.h2-h4 Bf8-g7 34.Bb2xg7 Kg8xg7 35.Qb1-b2+ is no bargain.

33.Qb1-c2 h7-h6

After this Black comes to a bad end, if 33...Bf8-e7 White has a pleasant choice between 34.Qc2-c3 f7-f6 35.Be2-c4 or 34.Ng5-e4 Nc5xe4 35.Qc2xe4.

34.Ng5xf7 Kg8xf7

35.Be2-h5 Kf7-e7

There is no good defence, as 35...g6xh5 36.Qc2-h7+ Kf7-e8 37.Qh7-g6+ Ke8-e7 38.Bb2-f6 is mate.

36.Qc2xc5+

36.Bb2-f6+ Ke7xf6

37.Qc2xg6+ Kf6-e5 38.f2-f4 mate was quicker, but this is more than good enough.

36... Ke7-f7

37.Qc5-c2

1-0