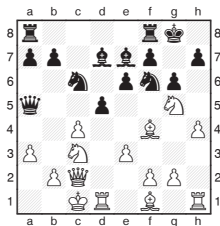


Michael Adams



Peters out to attack

Peter Heine Nielsen and Peter Svidler proved a good choice to contest a blitz match honouring Nielsen's compatriot Bent Larsen, who celebrated his 75th birthday earlier this year. The Russian proved the swifter, winning handily overall, but Nielsen won the most spectacular game of the event given below.



Nielsen, PH - Svidler, P
Politiken Larsen Blitz
Copenhagen 2010

Blitz games aren't often of high quality, but Peter Heine Nielsen does a great job of threading his way through the complications here.

13.h4-h5 e6-e5
14.h5xg6 h7xg6
15.Rh1-h6

Ignoring the threat to White's bishop and heading straight for Black's king.

15... Kg8-g7

The alternative
15...Bd7-f5 16.Bf1-d3
Nf6-g4 17.Bd3xf5 Ng4xh6
18.Bf5-e6 is also pretty hazardous for Black.

16.Ng5xf7 Bd7-f5
17.Bf1-d3 e5-e4
18.Bd3-e2 Rf8xf7

Svidler missed a neat defensive resource here:
18...d5-d4 19.e3xd4 Rf8xf7
gives him time to organise the defence.

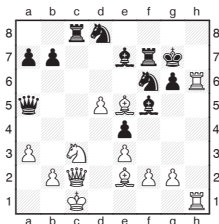
19.c4xd5 Nc6-d8

The knight doesn't have a good square, so the surprising 19...g6-g5
20.Bf4xg5 Nc6-e5 was the last hope.

20.Rd1-h1 Ra8-c8

21.Bf4-e5

This powerful move decisively pins the knight, which was holding Black's kingside together.



21... g6-g5

22.Be2-g4

The more mundane 22.g2-g4 Bf5-g6 23.f2-f4 was very good, but this flashy finisher is a nice way to end the game.

22... Rc8xc3

If 22...Bf5xg4 23.Rh6-h7+ Kg7-f8 24.Rh7-h8+ Kf8-g7 25.Qc2xe4 corners Black's king.

23.Be5xc3 Qa5xd5

24.Bg4xf5 Qd5xf5

25.f2-f3

There is no respite as White keeps up the momentum.

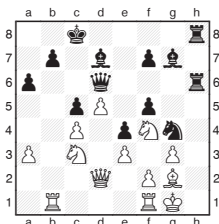
25... Nd8-c6

26.f3xe4 Qf5-e6

27.Rh6-h7+

1-0

The game below was one of the themed encounters starting 1.b2-b3, sometimes known as Larsen's Opening.



Nielsen, PH - Svidler, P

Politiken Larsen Blitz
Copenhagen 2010

25.Rf1-d1

25.Rf1-c1 would have kept

the game going for a bit, although trouble is brewing down the 'h' line. Now Svidler finishes the game with a little combination.

25... Bg7xc3

26.Qd2xc3 Rh6-h1+

27.Bg2xh1 Rh8xh1+

28.Kg1-g2

28.Kg1xh1 Qd6-h6+

29.Kh1-g1 Qh6-h2+

30.Kg1-f1 Qh2xf2 is mate.

28... Rh1-h2+

29.Kg2-g1

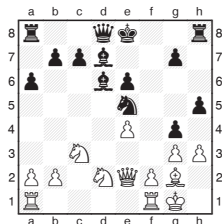
29.Kg2-f1 Rh2xf2+

30.Kf1-e1 Qd6-h6 is no better.

29... Qd6-h6

0-1

Alexander Morozevich had a tough time in this Spanish event recently, but showed some of the old magic in this crunching brevity.



Reinaldo Castineira, R - Morozevich, A

Pamplona 2010

The Catalan is normally a solid opening, but things have gone horribly wrong for White already.

17... h5-h4

18.f2-f4 Bd6-c5+

19.Kg1-h1 g4xh3

20.Bg2-f3

20.f4xe5 h3xg2+

21.Kh1xg2 Qd8-g5 is

dreadful, but this allows Morozevich a deadly pawn duo.

20... h4xg3

21.f4xe5 g3-g2+

Resigning looks like a good option, but White fights on to the bitter end.

22.Kh1-h2 Qd8-g5

23.Rf1-f2 Qg5xe5+

24.Kh2-g1 Qe5-g3

25.Bf3-h5+ g7-g6

26.Bh5xg6+ Ke8-d8

0-1