

**Michael Adams**



## Short and Jones fight to the finish

The hospitable Bunnratty weekender sponsored by Blackthorne International Transport provided the traditional whirl of Guinness, too much chess and not enough sleep. So this spectacular last-round game, showcasing imaginative attacking play against gritty defence, was a great effort by both players.

**N. Short - G. Jones**  
Bunnratty Open 2012

- |                 |               |
|-----------------|---------------|
| <b>1.e2-e4</b>  | <b>c7-c5</b>  |
| <b>2.b2-b3</b>  | <b>g7-g6</b>  |
| <b>3.Bc1-b2</b> | <b>Ng8-f6</b> |
| <b>4.Qd1-f3</b> | <b>Bf8-g7</b> |
| <b>5.e4-e5</b>  | <b>Nf6-g8</b> |
| <b>6.e5-e6</b>  | <b>Ng8-f6</b> |
| <b>7.e6xf7+</b> | <b>Ke8xf7</b> |
| <b>8.g2-g4</b>  |               |

An excellent idea, preventing Black castling artificially with Rh8-f8 and Kf7-g8.

- |                 |              |
|-----------------|--------------|
| <b>8...</b>     | <b>h7-h6</b> |
| <b>9.Nb1-c3</b> | <b>d7-d5</b> |
| <b>10.h2-h3</b> |              |

Necessary, as 10.Nc3xd5 Bc8xg4 rebounds.

- |              |              |
|--------------|--------------|
| <b>10...</b> | <b>e7-e6</b> |
|--------------|--------------|
- The immediate 10...Nb8-c6 11.Nc3xd5 Qd8xd5 12.Bf1-c4 Bc8-e6 13.Bc4xd5 Be6xd5 14.Qf3-f4 Bd5xh1 15.f2-f3 is probably good for White.

- |                 |               |
|-----------------|---------------|
| <b>11.0-0-0</b> | <b>Nb8-c6</b> |
|-----------------|---------------|

Although White's development has been unconventional, his king is safely tucked away on the queenside, allowing him to start action on the other side of the board.

- |                  |               |
|------------------|---------------|
| <b>12.Rd1-e1</b> | <b>Nc6-d4</b> |
| <b>13.Qf3-g2</b> | <b>Bc8-d7</b> |
| <b>14.Ng1-f3</b> | <b>Nd4xf3</b> |

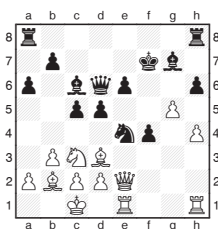
- |                  |               |
|------------------|---------------|
| <b>15.Qg2xf3</b> | <b>Bd7-c6</b> |
|------------------|---------------|

Black's position is quite tricky, the natural 15...Qd8-a5 loses at once to 16.Nc3xd5.

- |                  |               |
|------------------|---------------|
| <b>16.Bf1-d3</b> | <b>Qd8-d6</b> |
| <b>17.h3-h4</b>  | <b>g6-g5</b>  |
- 17...d5-d4 18.Nc3-e4 Kf7-e7 also doesn't look appetising.
- |                  |              |
|------------------|--------------|
| <b>18.Qf3-e2</b> | <b>a7-a6</b> |
| <b>19.f2-f4</b>  |              |

Another inspired pawn-thrust keeps the pressure on.

- |                 |               |
|-----------------|---------------|
| <b>19...</b>    | <b>g5xf4</b>  |
| <b>20.g4-g5</b> | <b>Nf6-e4</b> |
- 20...h6xg5 21.h4xg5 Nf6-e4 22.g5-g6+ Kf7-e7 23.Rh1-h7 gave better hopes of survival.



- |                  |  |
|------------------|--|
| <b>21.g5-g6+</b> |  |
|------------------|--|

The queen check was even better: 21.Qe2-h5+ Kf7-f8 22.g5xh6 Rh8xh6 23.Nc3xe4.

- |                   |               |
|-------------------|---------------|
| <b>21...</b>      | <b>Kf7-e7</b> |
| <b>22.Nc3xd5+</b> | <b>Bc6xd5</b> |
| <b>23.Bb2xg7</b>  | <b>Ne4-g3</b> |
| <b>24.Qe2-g4</b>  | <b>Ng3xh1</b> |
| <b>25.Bg7-e5</b>  | <b>Qd6-d8</b> |

Black is nominally ahead on material, but White's dominant pieces and advanced pawn more than tip the balance in his favour.

- |                  |               |
|------------------|---------------|
| <b>26.g6-g7</b>  | <b>Rh8-g8</b> |
| <b>27.Qg4xf4</b> |               |

27.Bd3-h7 was also very good.

- |                  |               |
|------------------|---------------|
| <b>27...</b>     | <b>Ke7-d7</b> |
| <b>28.c2-c4</b>  | <b>Bd5-c6</b> |
| <b>29.Bd3-e4</b> |               |

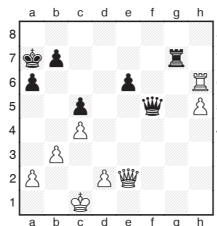
The strong 29.Bd3-f5 embarrasses Black's king.

- |                   |               |
|-------------------|---------------|
| <b>29...</b>      | <b>Qd8-e7</b> |
| <b>30.Be4xc6+</b> | <b>Kd7xc6</b> |
| <b>31.Re1-g1</b>  | <b>Qe7-d7</b> |
| <b>32.Qf4-f3+</b> | <b>Kc6-b6</b> |
| <b>33.Qf3xh1</b>  |               |

The smoke has cleared, and Nigel has regained a piece, hanging on to his passed

pawn, but Gawain had a crucial few extra minutes on the clock.

- |                  |               |
|------------------|---------------|
| <b>33...</b>     | <b>Ra8-d8</b> |
| <b>34.Qh1-h2</b> | <b>Qd7-f7</b> |
| <b>35.Qh2-e2</b> | <b>Qf7-f5</b> |
| <b>36.h4-h5</b>  | <b>Rd8-d7</b> |
| <b>37.Rg1-g6</b> | <b>Kb6-a7</b> |
| <b>38.Rg6xh6</b> | <b>Rd7xg7</b> |
| <b>39.Be5xg7</b> | <b>Rg8xg7</b> |



- |                  |  |
|------------------|--|
| <b>40.Qe2-e3</b> |  |
|------------------|--|

It was impossible to calculate the final winning opportunity 40.Qe2xe6 Rg7-g1+ 41.Kc1-b2 Qf5-b1+ 42.Kb2-a3 Qb1-c1+ 43.Ka3-a4 Qc1-b2 44.Qe6-b6+ Ka7-a8 45.a2-a3 Rg1-a1 46.Qb6xc5 when threats to the White king are illusory, 46...b7-b5+ 47.c4xb5 a6xb5+ 48.Ka4xb5 Qb2xb3+ 49.Kb5-c6 Qb3-b7+ 50.Kc6-d6 Qb7-b8+ 51.Kd6-d7 Qb8-b7+ 52.Kd7-d8 and the extra pawns tell.

- |                   |               |
|-------------------|---------------|
| <b>40...</b>      | <b>Rg7-g5</b> |
| <b>41.Rh6xe6</b>  | <b>Rg5xh5</b> |
| <b>42.Kc1-b2</b>  | <b>Rh5-h1</b> |
| <b>43.Kb2-a3</b>  | <b>Rh1-h3</b> |
| <b>44.Qe3-e5</b>  | <b>Qf5xe5</b> |
| <b>45.Re6xe5</b>  | <b>Rh3-h2</b> |
| <b>46.Re5-d5</b>  | <b>Ka7-b6</b> |
| <b>47.b3-b4</b>   | <b>c5xb4+</b> |
| <b>48.Ka3xb4</b>  | <b>Kb6-c6</b> |
| <b>49.a2-a4</b>   | <b>b7-b6</b>  |
| <b>50.a4-a5</b>   | <b>b6-b5</b>  |
| <b>51.Rd5-c5+</b> | <b>Kc6-b7</b> |
| <b>52.Kb4-c3</b>  |               |

After 52.c4xb5 Rh2xd2 53.b5-b6 Rd2-d4+ 54.Rc5-c4 Rd4xc4+ 55.Kb4xc4 Kb7-c8 the king and pawn ending is a simple draw.

- |                   |               |
|-------------------|---------------|
| <b>52...</b>      | <b>b5xc4</b>  |
| <b>53.Rc5xc4</b>  | <b>Rh2-h5</b> |
| <b>54.Kc3-b4</b>  | <b>Rh5-d5</b> |
| <b>55.d2-d4</b>   | <b>Kb7-b8</b> |
| <b>56.Kb4-a4</b>  | <b>Kb8-b7</b> |
| <b>57.Rc4-b4+</b> | <b>Kb7-c7</b> |
| <b>58.Rb4-c4+</b> | <b>Kc7-d7</b> |
- 1/2-1/2