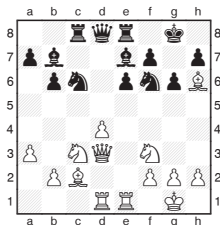


Michael Adams



Seaside not so special

Hastings was never my favourite tournament, mainly as, despite several attempts, I never managed a very inspiring result there. This year most of the home players probably also wished they had seen in the New Year elsewhere.



A. Istratescu - J. Houska
Hastings 2011

16.Bc2-b3

Having forced a concession on the kingside, the bishop looks for a more active diagonal.

16... **Nc6-a5**
17.Bb3-a2 **Bb7-d5**

It looks natural to swap pieces, but White's bishop proves very influential so it may have been better to chase the White knight with 17...Nf6-d5 18.Nc3-e4 Nd5-f6 and then if 19.Ne4-g5 then 19...Bb7-d5.

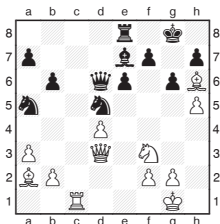
18.Nc3xd5 **Nf6xd5**
19.h2-h4

A thematic advance increasing the pressure on Black's creaking kingside.

19... **Qd8-c7**

Capturing the pawn is very dangerous: 19...Be7xh4 20.b2-b4 Na5-c6 21.Ba2xd5 Qd8xd5 22.Nf3xh4 Qd5-h5 23.Qd3-e3 Qh5xh4 24.d4-d5, instead 19...Be7-f6 20.h4-h5 Na5-c6 bringing the knight back into play looks better.

20.Rd1-c1 **Qc7-d6**
21.h4-h5 **Rc8xc1**
Conceding the open file is dangerous, 21...Na5-c6 was better.
22.Re1xc1



22... **Nd5-f4**
A mistake. Now both knights become unstable, 22...Be7-f8 was best.

23.Qd3-b5 **Re8-a8**
There isn't a good defence: 23...Re8-d8 24.b2-b4 Na5-b7 25.Nf3-e5 Nf4-d5 26.Rc1-c6 Qd6-b8 27.h5xg6 h7xg6 28.Rc6xe6 f7xe6 29.Qb5-d3 is a typical line.

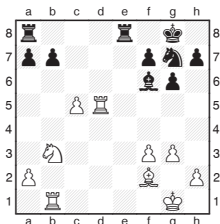
24.h5xg6 **h7xg6**
25.b2-b4 **a7-a6**
25...Na5-b7 26.Nf3-e5 Nf4-d5 27.Qb5-d3 Be7-f6 28.Ne5xg6 is decisive.

26.Qb5-f1 **Na5-b7**
27.Nf3-e5 **Nf4-d5**
28.Qf1-d3 **Be7-f8**
29.Bh6-g5
29.Rc1-c6 was even stronger.

29... **Nd5-e7**
After the better 29...Nb7-d8 30.Qd3-f3 Bf8-g7 White has some work still to do.

30.Qd3-f3
1-0

Wang Yue's rating has surprisingly slid below 2700 and he decided to try his luck in an open event, proving much too classy for the rest of the field.



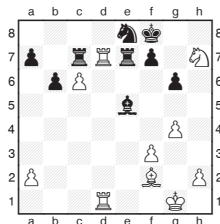
Wang Yue - A. Vovk
Hastings 2012

24.Nb3-d2
Wang Yue calmly improves his pieces, transferring his knight to a strong central post before taking an iron grip on the 'd' line.

24... **Re8-e7**
25.Nd2-e4 **Ng7-e8**
26.Rb1-d1 **Kg8-f8**
27.Rd5-d7 **Ra8-c8**
28.g3-g4 **Bf6-e5**

Black cracks under the mounting pressure: 28...h7-h6 was better.

29.c5-c6 **b7-b6**
Forced as 29...Rc8xc6 30.Bf2-c5 wins.
30.Ne4-g5 **Rc8-c7**
31.Ng5xh7+



31... **Kf8-g7**
This natural move is an error. 31...Kf8-g8 was necessary as the idea from the game, 32.Rd7xe7 Rc7xe7 33.Rd1-d7, can be countered by 33...Re7-e6.

32.Rd7xe7
Wang Yue is tactically alert and inserts some forcing moves before withdrawing the knight.

32... **Rc7xe7**
33.Rd1-d7 **Be5-d6**
Now Black has to defend passively as 33...Re7-e6 34.Nh7-g5 Re6xc6 35.Rd7xf7+ Kg7-g8 36.Rf7-e7 wins a piece.

34.Nh7-g5
White keeps the extra pawn and his pieces dominate. Very soon he wins a piece.

34... **Bd6-b4**
35.Bf2-d4+ **f7-f6**
36.Ng5-e6+ **Kg7-f7**
37.c6-c7 **Ne8xc7**
38.Rd7xe7+
1-0