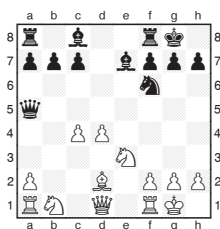


Michael Adams



World-class calamities

Grandmasters make a lot of good moves, but sometimes their bad ones are more entertaining. Here are some spectacular disasters from around the world.



Robson, R - Perelshteyn, E
Lubbock 2010

13... Qa5-h5

Black would be fine after, amongst others, 13...Be7-b4, but unfortunately decided to offer the exchange of queens.

14.Ne3-d5

Now forced Black to resign as the intermezzo 14...Qh5xd1 15.Nd5xe7+ picks up a piece.

Now on to the world blitz, so we should cut the players some slack, but it is still remarkable to see Karjakin lose so quickly.

Andreikin, D - Karjakin, S
World Blitz Moscow 2010

1.c2-c4 e7-e5
2.Nb1-c3 Nb8-c6
3.Ng1-f3 g7-g6
4.d2-d4 e5xd4
5.Nc3-d5

A very tricky move to meet in a blitz game.

5... Bf8-g7
6.Bc1-g5 Ng8-e7

Black needs to be on his guard. Strangely after this

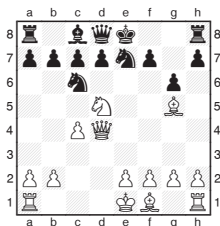
error Andreikin is already winning! The other knight moves 6...Ng8-f6 7.Nf3xd4 a7-a6 or 6...Nc6-e7 7.Nf3xd4 c7-c6 enable him to get developed.

7.Nf3xd4 Bg7xd4

Things look grim: 7...h7-h6 8.Nd4xc6 wins a piece, relatively best was 7...f7-f6 8.Bg5xf6 Bg7xf6 9.Nd5xf6+, which leaves White with an extra pawn and a winning position, but now Karjakin struggles to take the move-count into double figures.

8.Qd1xd4

This startling recapture must have been missed.



8... O-O

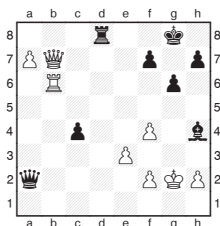
Taking the queen leads to immediate mate: 8...Nc6xd4 9.Nd5-f6+ Ke8-f8 10.Bg5-h6.

9.Nd5-f6+ Kg8-h8
10.Nf6-g4+

Black resigned as mate can't be averted for long 10...Nc6xd4 11.Bg5-f6+ Kh8-g8 12.Ng4-h6 mate is the prettiest finish.

We conclude with a fiendishly difficult game.

Giri, A - Berkes, F
Bundesliga 2010



A very complicated position, White is a piece down with a dodgy king, but the

passed pawn will often cost Black a rook.

33.Kg2-h3 c4-c3

Sensibly advancing his pawn as 33...Bh4xf2 34.Qb7-c7 and 33...Qa2xf2 34.a7-a8Q don't trouble White.

34.Qb7-b8

After 34.Kh3xh4 Qa2xf2+ 35.Kh4-g5 h7-h6+ 36.Kg5-f6 Qf2-h4+ 37.Kf6-e5 c3-c2 White's king dies of exposure.

34... Bh4-e7

35.Qb8-b7

By now both players were low on time, 35.Qb8-c7 was stronger pressurising Black's rook.

35... Be7-h4

Black could win with 35...Be7-c5 36.Rb6-a6 Qa2xf2 37.a7-a8Q Rd8xa8 38.Qb7xa8+ Kg8-g7.

36.Rb6-a6

It was better try to repeat with 36.Qb7-b8.

36... Qa2xf2

37.a7-a8Q c3-c2

The strongest continuation was 37...Rd8xa8 38.Ra6xa8+ Kg8-g7 39.Qb7-b4 Qf2xe3+ 40.Kh3xh4 Qe3-f2+ 41.Kh4-h3 Qf2-f3+ 42.Kh3-h4 Qf3xa8 43.Qb4xc3+ when White is fighting for a draw.

38.Qb7-c6

More than two queens on the board are highly confusing, and with the king under pressure it is natural to aim for simplification, but Giri should have retained his extra lady: 38.Qa8-a7 Rd8-f8 39.Ra6-c6 Bh4-f6 40.Rc6xc2 Qf2xc2 leads to a draw.

38... Rd8xa8

39.Ra6xa8+ Kg8-g7

40.Ra8-c8 Bh4-f6

A neat finish, White resigned as 41.Qc6xc2 Qf2-f3 is mate.