

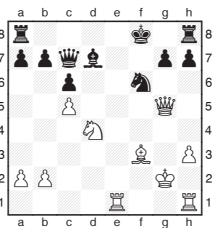
Michael Adams



To boldly go professional

Many English Grandmasters have retired from chess and ventured forth into the real world. Tony Kosten is an odd one out, as many years ago he did the reverse and gave up his day job for the itinerant life of a professional player. A good decision, as his direct attacking style is a treat for everyone.

Here are some of his greatest hits to date:



Kosten, A - Farago, I
Amantea 1992

Black's king is a sitting duck in the centre and Tony finishes in grand style.

26.Rh1-f1 h7-h5

26...h7-h6 27.Qg5-g6

Qc7-f4 offered some hopes of survival.

27.Bf3-d5

27.Re1-e6 was also rather enticing.

27... Rh8-h6

28.Qg5xh6

A beautiful sacrifice luring the king into a mating net, the mundane 28.Bd5-b3 was also deadly.

28... g7xh6

29.Rf1xf6+ Kf8-g7

30.Rf6-f7+ Kg7-g6

31.Bd5-b3 Qc7-a5

The calm bishop-retreat has left black with no defence. Another nice line runs: 31...h5-h4 32.Nd4-f5 Ra8-g8 33.Kg2-h1 Kg6-h5 34.Nf5-d6 Rg8-g3

35.Re1-e5+ Rg3-g5

36.Rf7-g7 Rg5xe5

37.Bb3-f7 mate.

32.Nd4-f3

Protecting the rook and threatening knight checks.

32... Ra8-e8

Understandably aiming to exchange material, but it's too little too late.

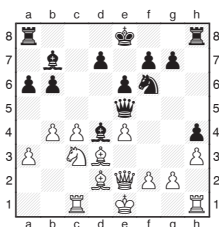
33.Re1xe8 Bd7xe8

34.Nf3-e5+ Kg6-g5

35.h3-h4+ Kg5xh4

36.Ne5-f3+

and Black resigned before 36...Kh4-g4 37.Bb3-e6 mate.



Horvath, J - Kosten, A
French Team Championship 2002

16.0-0

The King gets sucked into stormy waters on the kingside, 16.f2-f4 was better.

16... g7-g5

Tony seizes the opportunity to whip up an attack based on his impressive dark-square control.

17.Kg1-h1

17.Qe2-f3 preparing Nc3-e2 had to be tried.

17... g5-g4

18.h3xg4

18.f2-f4 was the last hope.

18... Qe5-g3

The shocking queen insertion breaks White's defences.

19.Bd2-e3

The queen can't be captured due to 19.f2xg3 h4xg3+ leading to mate and 19.Qe2-f3 Nf6xg4 is no better.

19... Nf6xg4

20.f2xg3 h4xg3+

21.Kh1-g1 Ng4xe3

21...Bd4xe3+ 22.Qe2xe3 Ng4xe3 23.Rf1-f3 enables White to survive unscathed,

but now the discovered checks are too strong.

22.Rf1-f2 Ne3-f5

Simplifying to a winning ending. It was also possible to play 22...g3xf2+

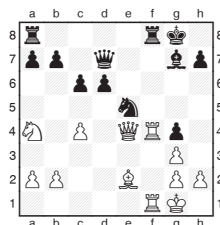
23.Kg1xf2 (23.Qe2xf2 e6-e5) 23...Ne3xc4+ 24.Kf2-g3 Nc4-e5 when Black's pieces outweigh White's queen.

23.e4xf5 g3xf2+

24.Qe2xf2 Bd4xf2+

25.Kg1xf2 Ke8-e7

and Black won with his extra exchange.



Minnebo, A - Kosten, A
La Reunion 1997

Here White couldn't resist snagging a pawn, but it leaves his back-rank very vulnerable.

22.Be2xg4 Ne5xg4

23.Rf4xg4 Rf8xf1+

24.Kg1xf1 Ra8-e8

25.Qe4-f3 Qd7-e6

26.Qf3-d1

Forced as 26.Kf1-g1

Qe6-e1+ 27.Qf3-f1 Qe1-d2 wins.

26... Re8-f8+

27.Kf1-g1

27.Rg4-f4 Rf8xf4+ 28.g3xf4 Qe6xc4+ is also bad.

27... Qe6-e3+

28.Kg1-h1 Qe3-d2

29.Qd1-g1

Not 29.Qd1xd2 Rf8-f1 mate.

29... Rf8-e8

29...Qd2-e2 30.Rg4-f4 gives White chances to fight.

30.Rg4-f4 Re8-e1

31.Rf4-f1 Bg7-d4

White's queen is completely boxed in.

32.Rf1xe1 Bd4xg1

33.Re1xg1 Qd2-c2

34.Na4-c3 Qc2xb2

35.Nc3-e4

White resigned as

35...Qb2-d4 wins another pawn.