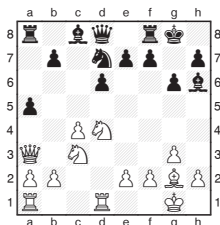


Michael Adams



Classic play by McShane

Luke McShane was the local hero at the London Chess Classic, which built on the great success of last year's event. He started proceedings with a bang in the game below:



McShane, L - Carlsen, M
London Classic 2010

13.b2-b4

Craftily exploiting the pin on the 'a' pawn to expand on the queenside.

13... Ra8-a6

It looks tempting to start jumping with Black's knight, but after 13...Nd7-e5

14.c4-c5 Ne5-c4 15.Qa3-b3

Nc4-d2 16.Qb3-c2 a5xb4

17.Nc3-d5 Black's horse

is out of bounds, whereas White's knights are stacked on strong central posts.

14.b4-b5 Ra6-a8

15.e2-e3 a5-a4

16.Ra1-b1

White has a big lead in development, and Carlsen is struggling to develop his bishop on c8.

16... Bh6-g7

17.Nc3-e4 Qd8-b6

18.Nd4-c6 Rf8-e8

Exchanging some pieces with 18...b7xc6 19.b5xc6

Qb6-a5 (19...Qb6xc6

20.Ne4-f6+ wins the queen)

20.c6xd7 Bc8xd7

21.c4-c5 Bd7-g4 was worth considering.

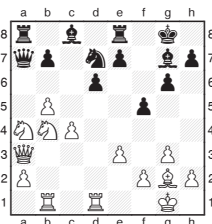
19.Nc6-b4 f7-f5

It was more solid to hunker down with 19...Qb6-a5 this pawn thrust creates new targets.

20.Ne4-c3 Qb6-c5

The committal 20...e7-e6 looks the logical follow-up to Black's last, this error allows Luke to open the game with some clever tactical finesse.

21.Nc3xa4 Qc5-a7



22.Nb4-a6

The knight gives itself up to close off the 'a' line and clear the way for White's pawn.

22... b7xa6

23.b5-b6 Nd7xb6

The alternative 23...Qa7-b8 24.Qa3-b3 Kg8-h8 25.c4-c5 is even worse.

24.Rb1xb6 Ra8-b8

25.c4-c5

Undermining Black's pawn structure and opening a key diagonal to Black's king.

25... Bc8-e6

25...d6xc5 26.Qa3-b3+

c5-c4 27.Qb3xc4+ Kg8-h8

28.Rb6xb8 Qa7xb8

29.Qc4-f7 isn't much fun

either.

26.Rd1-b1 d6xc5

Forced as after 26...Qa7-c7

27.c5-c6 the passed pawn is

too strong.

27.Rb6-b7 Rb8xb7

28.Rb1xb7 Qa7-a8

29.Na4xc5 Qa8-c8

If 29...Be6-f7 30.Rb7xe7

Qa8-d8 31.Re7xe8+ Qd8xe8

32.Qa3xa6 the two extra

pawns are decisive.

30.Qa3xa6 Be6-f7

31.Bg2-c6 Re8-d8

32.Nc5-d7 Rd8xd7

After 32...h7-h5 33.Qa6-b6

the Black queen is fatally

boxed in.

33.Bc6xd7

34.Qa6-f1

35.Kg1-xf1

36.Kf1-g1

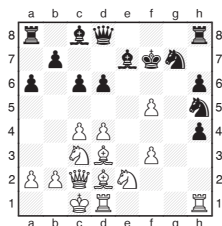
37.Bd7-a4

38.f2-f3

39.Ba4-b3+

Black resigned as once the bishops are exchanged the endgame is an easy win.

English players dominated the open alongside, with Simon Williams and Gawain Jones sharing the honours.



Williams, S - Wall, G

London Chess Classic Open 2010

Black's king is not happily situated and an entertaining hunt ensues.

19.f5-f6

20.Bd3-g6+

21.d4-d5+

22.d5xc6+

23.Bd2-f4

24.Ne2-d4

25.Rh1-e1

Although the monarch has slunk off to the queenside, the threats keep on coming.

25... Be7-f8

26.Qc2-d2 Kc7-b7

27.Nd4-b3

27.Nd4xc6 Kb7xc6

28.Qd2-d4 also doesn't

look bad.

27... Qa5-b4

28.Bf4xd6 Bf8xd6

29.Qd2xd6 Qb4xd6

30.Rd1xd6

The exchange of queens hasn't dissipated the initiative and Gavin allows a pretty finish.

30... Ng7-e8

31.Re1-e7+ Kb7-b6

32.c4-c5

mate