

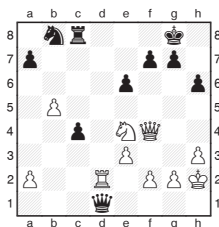
Michael Adams



Tour de force from Clichy

The French Team Championship led to a convincing victory for long-time powerhouse Clichy, with a perfect score despite the strong opposition.

Here are some impressive games from a few of the leading home players:



Black's pieces, particularly the knight on b8, are less centralised than White's and this is reflected in the surprisingly tactical play that arises.

E. Bacrot - D. Svetushkin
Belfort 2012

41... Qd1-h5
If 41...Qd1-c1 42.Rd2-d4 leaves the black king in big trouble, 42...c4-c3 43.Ne4-f6+ Kg8-h8 (43...g7xf6 44.Qf4xh6 f6-f5 45.Rd4-h4 wins) 44.Qf4-c7 is one nice line.

42.Ne4-d6
The most precise was 42.g2-g4 Qh5-h4 43.Ne4-d6 Rc8-f8 44.Nd6xc4 when White picks off a pawn.

42... c4-c3
43.Nd6xc8 c3xd2
44.Nc8-e7+
44.Qf4xb8 looks appealing, as 44...d2-d1Q 45.Nc8-e7+ Kg8-h7 46.Qb8-g8 mate would be a pleasant way to end the game. However, 44...f7-f6 45.Nc8-e7+ Kg8-

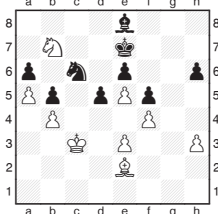
f7 46.Qb8xa7 (Not 46...d2-d1Q 47.Ne7-f5+) Kf7-f8 is not so simple.

44... Kg8-f8
45.Qf4-d6 d2-d1Q

This natural move is a blunder: Black could have fought on with 45...Kf8-e8 46.Ne7-c8 Qh5-g5 47.Qd6xd2 Qg5-c5.

46.Ne7-g6+ Kf8-g8
47.Qd6xb8+ Kg8-h7
48.Ng6-e7

Black resigned, as there is nothing to be done.

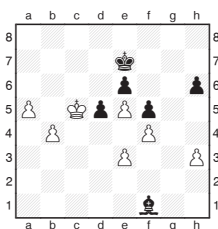


L. Fressinet - C. Nanu
Belfort 2012

91... Be8-f7
After 91...Be8-d7 92.Nb7-c5 Bd7-c8 it looks like there is no way for White to break through the blockades, as the bad bishop holds things together. Now Laurent seizes the chance.

92.Nb7-c5 Nc6-b8
93.Nc5xa6 Nb8xa6
94.Be2xb5 Na6-c7
95.Bb5-e2 Bf7-e8
96.Kc3-d4
White's king infiltrates, providing decisive support for the pawns.

96... Nc7-b5+
97.Be2xb5 Be8xb5
98.Kd4-c5 Bb5-f1



99.h3-h4
White retains his pawn,

preventing any counterplay, but correct was 99.Kc5-b6 Bf1xh3 100.a5-a6 Bh3-g2 101.Kb6-c7 d5-d4 102.e3xd4 h6-h5 103.b4-b5 h5-h4 104.b5-b6 h4-h3 105.b6-b7 h3-h2 106.b7-b8Q h2-h1Q 107.Qb8-d8+ Ke7-f7 108.Qd8-f6+ Kf7-g8 109.Qf6xe6+ Kg8-g7 110.Qe6xf5 when the many pawns outweigh the bishop.

99... Ke7-d7
100.b4-b5 Kd7-c7
101.a5-a6 Kc7-b8
102.Kc5-d6 Bf1xb5

As the pawn on e6 is poisoned after 102...Bf1-c4 103.b5-b6 h6-h5 it's hard to progress, following 104.Kd6-d7 Kb8-a8 105.a6-a7 Ka8-b7 106.Kd7-d6 Kb7-a8 107.Kd6-c6 Bc4-a6 108.Kc6-c7 Ba6-b7 109.Kc7-d7 d5-d4 110.e3xd4 Bb7-d5 White has won a third pawn, but to no avail.

103.Kd6xe6 Bb5xa6
104.Ke6xf5 Kb8-c7
White grabs another pawn and it's quickly over. 104...Ba6-d3+ was a better try 105.Kf5-f6 Kb8-c7 106.e5-e6 (106.Kf6-f7 Bd3-f5 107.e5-e6 Kc7-d6 108.e6-e7 Bf5-e6+ 109.Kf7-f8 Be6-d7 110.e7-e8Q Bd7xe8 111.Kf8xe8 Kd6-e6 is not simple) 106...Bd3-e2 107.f4-f5 Kc7-d6 108.Kf6-g7 forces the pawns through.

105.Kf5-g6 Kc7-d7
106.Kg6xh6 Kd7-e6
107.h4-h5 Ke6-f7

107...Ba6-e2 was worth a try, as 108.Kh6-g6 is the only winning move, not 108.Kh6-g5 Be2-d3, which allows the bishop to control the pawns.

108.f4-f5 Ba6-d3
109.Kh6-g5 Kf7-g7
110.e5-e6 Kg7-h7
111.f5-f6
1-0