

**Michael Adams**



## Young talent enjoys day in the spotlight

In their "London - Take the Stage" campaign, Adidas arranged for 32 young talents from each London borough to be tutored by an expert in their field. Yang-Fan Zhou was selected as the promising youth from Croydon, and I acted as his mentor for a day.

While I helped him hone his opening repertoire, a bit of intrigue was added to proceedings for the camera crew with a revolving stage and melting chess pieces. You can watch a clip of the day at: <http://tinyurl.com/dyu8rrg>.

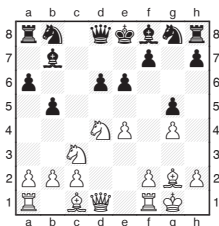
In this impressive recent game, Yang-Fan turns up the heat and it is Simon Williams's position that suffers a serious meltdown.

**Yang Fan Zhou - S.Williams**  
4NCL 2012

- |                 |               |
|-----------------|---------------|
| <b>1.e2-e4</b>  | <b>c7-c5</b>  |
| <b>2.Ng1-f3</b> | <b>e7-e6</b>  |
| <b>3.d2-d4</b>  | <b>c5xd4</b>  |
| <b>4.Nf3xd4</b> | <b>d7-d6</b>  |
| <b>5.Nb1-c3</b> | <b>a7-a6</b>  |
| <b>6.g2-g4</b>  | <b>b7-b5</b>  |
| <b>7.Bf1-g2</b> | <b>Bc8-b7</b> |
| <b>8.O-O</b>    | <b>g7-g5</b>  |

After 8...Ng8-f6, White plans to push forward on the kingside with 9.g4-g5 Nf6-d7 10.f2-f4, so Simon takes a radical blocking step, hoping to secure the e5 square for his knights in the future.

However, too many pawn moves and not enough development prove a hazardous combination. 8...Nb8-d7 was a better option.



**9.a2-a4** **b5-b4**

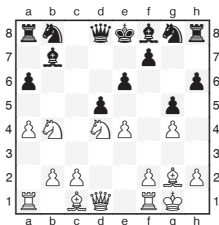
Black is reluctant to open the queenside, as 9...b5xa4 10.Ra1xa4 brings yet another White piece into the action and the threat of Ra4-b4 harassing his one developed piece is not easy to counter.

**10.Nc3-a2** **h7-h6**

Trying to shore up the kingside, but the tactical follow-up proves flawed; anyway the more natural 10...a6-a5 11.c2-c3 b4xc3 12.Qd1-b3 Bb7-a6 13.Nd4-b5 also looks rather ominous.

**11.Na2xb4** **d6-d5**

Instead Black could have continued his development with 11...Ng8-f6, but after 12.Qd1-e2 would have to continue a pawn down, as 12...d6-d5 13.Nb4xd5 e6xd5 14.e4xd5+Qd8-e7 15.Qe2-d1 leaves his king stranded.



**12.e4xd5**

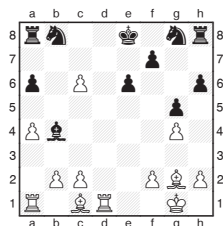
This looks very natural but in fact the other knight sacrifice 12.Nb4xd5 is even stronger. The sample line 12...e6xd5 13.e4xd5 Bb7xd5 14.Rf1-e1+ Bf8-e7 15.Nd4-f5 Bd5xg2 16.Re1xe7+ Ng8xe7

17.Nf5-g7+ Ke8-f8  
18.Qd1xd8+ shows the considerable dangers facing the Black monarch.

**12...** **Bf8xb4**  
**13.Nd4-c6** **Bb7xc6**

If 13...Qd8-d6 14.Nc6xb4 Qd6xb4 15.Ra1-a3 is very difficult to meet 15...Bb7xd5 (15...Qb4-d6 16.Ra3-b3 Bb7xd5 17.c2-c4 wins the bishop) 16.Bg2xd5 e6xd5 17.Qd1xd5 and Black must part with one of his rooks.

**14.d5xc6** **Qd8xd1**  
**15.Rf1xd1**



**15...** **Ra8-a7**

There was a subtle resource here, after 15...Ng8-e7 16.c6-c7 Nb8-c6 17.c2-c3 Bb4-a5 18.Rd1-d6 Ba5xc7 19.Bg2xc6+ (19.Rd6xc6 allows the surprising 19...O-O-O which might have been overlooked, when matters are not so clear) 19...Ne7xc6 20.Rd6xc6 Ke8-d7 there are chances to fight in the endgame. Now all Yang Fan's moves flow with tempo and Black is swiftly overwhelmed.

**16.Bc1-e3** **Ra7-c7**  
**17.Be3-b6** **Rc7-c8**

There is no way to resist as 17...Rc7xc6 18.Rd1-d8+ Ke8-e7 19.Rd8xb8 Rc6xc2 20.Bb6-d4 Bb4-d6 21.Rb8-b7+ wins.

**18.c6-c7** **Nb8-d7**  
**19.Bg2-c6** **Ng8-f6**  
**20.Rd1xd7** **Nf6xd7**  
**21.Ra1-d1** **Ke8-e7**  
**22.Rd1xd7+** **Ke7-f6**  
**23.Bc6-b7**  
**1-O**