

Chess

Michael Adams



London Chess Classic tickets to be won

It's competition time. The sponsors of The London Chess Classic, held, as before, at Olympia from December 8 to 15, have generously donated six one-day tickets for the event as prizes.

The tournament is bigger and better than ever this year as spectators will get an opportunity to watch World Champion Viswanathan Anand in action in the UK for the first time in many years.

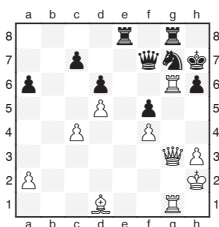
Another interesting subplot is the log jam at the top of the FIDE ranking list, with three of the contenders for the number one spot taking part in the event.

The full line-up is: Magnus Carlsen, Viswanathan Anand, Vladimir Kramnik, Hikaru Nakamura, and the top four English players: Nigel Short, Luke McShane, David Howell and your columnist. Guest of honour the legendary Viktor Korchnoi will also be giving two simul during the event.

The positions below all feature recent wins by participants. To enter, please provide the decisive move in each of the five games.

Position 1 White to play

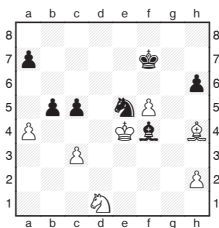
Which move did I make, causing Magnus Carlsen to resign?



Adams, Michael - Carlsen, M
Khanty Mansiysk Olympiad 2010

Position 2 Black to play

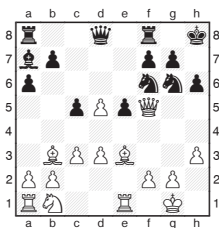
How did Viswanathan Anand turn the endgame in his favour?



Babula, V - Anand, V
Hungarian Team Championship 2009

Position 3 Black to play

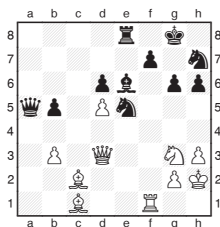
How did David Howell conclude a miniature? His next move forced his opponent's resignation.



Erdogdu, M - Howell, D
Khanty Mansiysk Olympiad 2010

Position 4 White to play

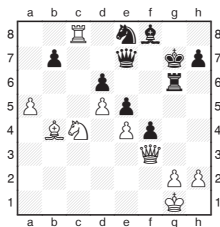
Last year's winner, Magnus Carlsen, will be back to defend his title. How did he conclude this game from the recent super tournament in China?



Carlsen, M - Topalov, V
Nanjing 2010

Position 5 White to play

How did Hikaru Nakamura abruptly decide this game?



Nakamura, H - Yoos, J
Lloydminster 2010

The first six correct entries out of the hat will have their choice of a day on which to watch the action.

Tickets are available to buy from the organisers' website. Please visit: www.londonchessclassic.com or call 020 7388 2404. Entries must arrive by November 13. The winners will be announced in this column on November 27.

Please send your completed entries to:

Chess Competition,
The Daily Telegraph,
PO Box 604, London
SW1W 0XE.