

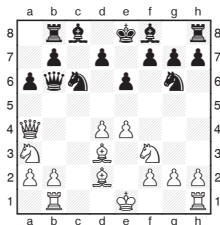
**Michael Adams**



## Rapid success for the stars

Vassily Ivanchuk and Hikaru Nakamura breezed through the qualifying groups in the Cap D'Agde rapid event.

Ivanchuk was especially sharp in this game, where both players play very aggressively and creatively.



**Ivanchuk, V - Polgar, J**  
Cap d'Agde 2010

**11...** **Bf8-b4**  
It looks sensible to develop the bishop, but the unconventional 11...Nc6-b4 12.Bd3-e2 Qb6-c6 was also interesting.

**12.Na3-c4** **Bb4xd2+**  
**13.Ke1xd2**

Ivanchuk astutely judges that the vulnerable dark squares are more important than White's displaced king.

**13...** **Qb6-c7**  
It's not in Judit's style to swap queens with the safer 13...Qb6-b4+ 14.Qa4xb4 Nc6xb4.

**14.Qa4-a3** **Qc7-f4+**  
**15.Kd2-e2** **d7-d5**

**16.g2-g3**  
16.Nc4-d6+ Ke8-d7 challenges the knight, so first the queen is nudged sideways.

**16...** **Qf4-g4**  
**17.Nc4-d6+** **Ke8-d7**

However, now there is a strong threat of Nc6xd4+.

There is only one good solution that would have been planned several moves ago.

**18.Ke2-e3**

Very calm. The king boldly steps forward: as there are no checks available he is relatively secure here.

**18...** **f7-f5**

**19.Bd3-e2**

Now the bishop drops back to the square vacated by the monarch to endanger the Black queen.

**19...** **f5xe4**

If 19...Kd7-c7 20.h2-h3 Qg4-h5 21.Nd6-f7 Rh8-f8 22.Nf3-e5 the queen is trapped.

**20.h2-h3** **Qg4xf3+**

Grabbing some material as 20...Qg4-h5 21.Nf3-e5+ wins the queen anyway.

**21.Be2xf3** **e4xf3**

**22.Rh1-c1** **Ng6-e7**

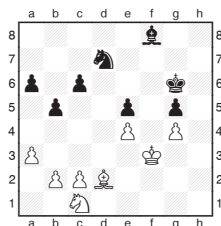
**23.Rc1-c2** **Rh8-f8**

**24.Rb1-c1**

And Ivanchuk converted the extra material into a win.

The knockout matches also presented few problems as the two main men headed for a repeat of the final from two years ago. Chukky gained his revenge, winning with the same score 1.5-0.5 and in a similar style, winning the key game with an endgame squeeze.

This game shows the problems posed by having your pawns on the wrong coloured squares where they can be attacked by your opponent's bishop. At the moment Nakamura is only facing minor difficulties, but a couple of inaccuracies and the game is suddenly over.



**Ivanchuk, V - Nakamura, H**  
Cap d'Agde 2010

**32...** **c6-c5**

The alternative 32...Nd7-c5 33.Bd2-b4 Nc5-e6 34.Bb4xf8 Ne6xf8 35.Nc1-d3 Nf8-d7 36.Nd3-b4 Nd7-b8 holds on.

**33.Nc1-a2** **Nd7-b8**

This was a good moment to move a pawn off a dark square with 33...c5-c4.

**34.c2-c4**

Ivanchuk seizes the moment to saddle Black with weak pawns all over the shop.

**34...** **b5xc4**

If 34...Nb8-c6 35.Na2-c3 is unpleasant.

**35.Na2-c3** **Nb8-c6**

**36.Nc3-d5** **Nc6-d4+**

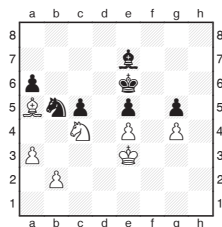
**37.Kf3-e3** **Kg6-f7**

White will get the pawn back anyway 37...Nd4-b5 38.a3-a4 Nb5-d4 (38...Nb5-d6 39.Nd5-c7) 39.Nd5-b6.

**38.Nd5-b6** **Kf7-e6**

**39.Nb6xc4** **Bf8-e7**

**40.Bd2-a5** **Nd4-b5**



**41.Ke3-d3** **Nb5-d6**

A surprising blunder after 41...Nb5-d4 Nakamura would face a long defensive task, but now it is quickly all over.

**42.Nc4xd6**

Black resigned as zugzwang is around the corner 42...Ke6xd6 43.Kd3-c4 Kd6-c6 44.Ba5-d2 Be7-d8 45.Bd2-e3 Bd8-e7 46.b2-b3 a6-a5 47.a3-a4 and a pawn and the game will disappear soon.