

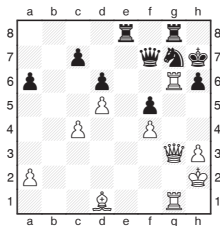
Michael Adams



London Classic competition solutions

Congratulations to the winners of the six tickets to the London Chess Classic, held at Olympia between December 8 to 15. Here are the solutions to the competition:

Position 1

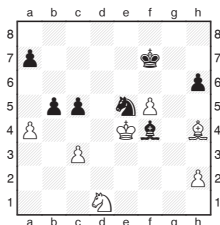


Adams, M - Carlsen, M
Khanty Mansiysk Olympiad 2010

38.Rg6xh6+

Black resigned as 38...Kh7xh6 39.Qg3-g5+ Kh6-h7 40.Qg5-h4+ Ng7-h5 41.Bd1xh5 Qf7-e7 42.Bh5-g6+ Kh7-g7 43.Bg6xe8+ wins everything.

Position 2



Babula, V - Anand, V
Hungarian Team Championship 2009

Knights often struggle against outside passed pawns and Anand exploited this factor here by playing

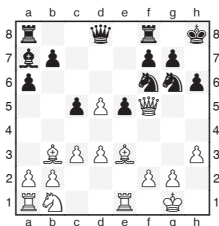
38... b5xa4 39.Ke4xf4

39.c3-c4 a4-a3 40.Nd1-c3 Bf4xh2 prevents an immediate coronation, but is hopeless in the long run.

39... Ne5-c4

White resigned as the knight blocks White's pieces and there is no way to prevent the 'a' pawn becoming a queen.

Position 3

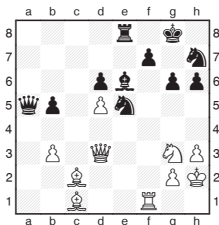


Erdogdu, M - Howell, D
Khanty Mansiysk Olympiad 2010

16... Ng6-h4

White resigned as 17.Qf5xe5 Ba7-b8 18.d5-d6 Bb8xd6 leaves the queen completely stranded in the centre of the board.

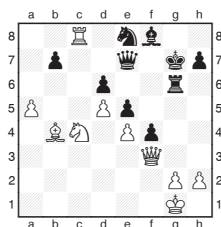
Position 4



Carlsen, M - Topalov, V
Nanjing 2010

32.d5xe6

Topalov resigned as he must continue a piece down or play 32...Ne5xd3 33.e6xf7+ Kg8-f8 34.Bc1xh6+ Kf8-e7 35.f7xe8Q+ Ke7xe8 36.Bc2xd3 Ke8-d8 37.Bd3xg6 Qa5-c7 38.Rf1-f7 wins the Black knight as well leaving the black queen hopelessly outnumbered.



Nakamura, H - Yoos, J
Lloydminster 2010

41.Nc4xe5

Black resigned as 41...Qe7xe5 42.Bb4-c3 wins the queen.

The standard of entry was extremely high, with almost all submissions being correct. Here are the six winners of tickets to the London Classic:

M. J. Reddie, East Sussex;
P. Rawcliffe, Buckinghamshire;
D. R. Dartnell, Essex;
B. Thurl, Hertfordshire;
R. Payne, London;
A. Crombie, Nottinghamshire.

The charity Chess in Schools and Communities is offering free chess lessons to all schools in the UK at the Classic. Please see www.chessinschools.co.uk or call 07808 795 838. Tickets are on sale at the event website: www.londonchessclassic.com or by phone on 020 7388 2404.