

Michael Adams



Siberian set book in to Bundesliga

Quite a few of the players returning from the Chess Olympiad in Khanty-Mansiysk barely had time to unpack their suitcases before rushing back to the airport en route to Germany for the first Bundesliga weekend.

Some were more refreshed by their Siberian sojourn than others. My Spanish teammate Paco Vallejo was in great form in this theoretical miniature against his talented young French opponent.

Edouard, R - Vallejo Pons, F
Bundesliga 2010

- | | |
|------------------|---------------|
| 1.d2-d4 | e7-e6 |
| 2.c2-c4 | d7-d5 |
| 3.Ng1-f3 | Ng8-f6 |
| 4.Nb1-c3 | c7-c6 |
| 5.Bc1-g5 | d5xc4 |
| 6.e2-e4 | b7-b5 |
| 7.e4-e5 | h7-h6 |
| 8.Bg5-h4 | g7-g5 |
| 9.Nf3xg5 | h6xg5 |
| 10.Bh4xg5 | Bf8-e7 |

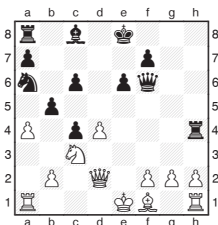
10...Nb8-d7 is the main theoretical highway here, but breaking the pin like this also looks logical.

- | | |
|------------------|---------------|
| 11.e5xf6 | Be7xf6 |
| 12.Bg5xf6 | Qd8xf6 |
| 13.Qd1-d2 | |

Most games would have continued 13.g2-g3, planning Bf1-g2 and aiming to find a safe home for the monarch behind the kingside pawns.

- | | |
|-----------------|---------------|
| 13... | Nb8-a6 |
| 14.a2-a4 | Rh8-h4 |

Continuing his unconventional but effective development, the rook gets busy along the fifth rank.



15.0-0-0

The king is not happily placed here, but 15.a4xb5 Rh4xd4 16.Qd2-e3 Na6-b4 allows Black's pieces to get very active.

- | | |
|------------------|--------------|
| 15... | b5-b4 |
| 16.Nc3-b1 | c6-c5 |

Vallejo continues his energetic play, opening lines on the file where White's king has taken up residence is especially useful.

- | | |
|------------------|---------------|
| 17.Bf1xc4 | Bc8-b7 |
|------------------|---------------|

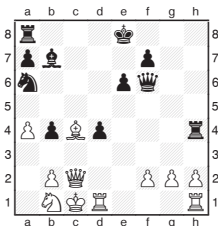
Another excellent move. The initiative is much more important than material, with both kings precariously placed.

Alternatively, 17...Rh4xd4 18.Bc4-b5+ Ke8-f8 19.Qd2-e2 allows White to consolidate.

18.Qd2-c2

White's position is very difficult to handle 18.Qd2-d3 Rh4xd4 19.Bc4-b5+ Ke8-e7 20.Qd3-g3 Ra8-c8 is also good for Black, but avoids immediate disaster.

- | | |
|--------------|--------------|
| 18... | c5xd4 |
|--------------|--------------|



19.Bc4xa6

Better was 19.Nb1-d2 Ra8-c8, although it is very unpleasant.

- | | |
|--------------|---------------|
| 19... | Ra8-c8 |
|--------------|---------------|

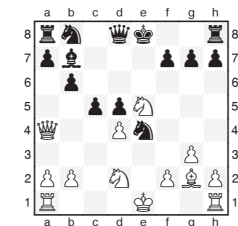
Of course not 19...Bb7xa6 20.Qc2-c6+ with a complete turnaround.

20.Ba6xb7

After 20.Qc2xc8+ Bb7xc8 21.Ba6xc8, White has enough material for the queen, but 21...Rh4-h5 picks up the loose bishop 22.Bc8-a6 Rh5-c5+ 23.Kc1-d2 Qf6xf2+ 24.Ba6-e2 d4-d3 25.Kd2xd3 Rc5-d5+. 20.Ba6-c4 d4-d3 allows both rooks to zero in on White's bishop.

- | | |
|--------------|----------------|
| 20... | Qf6-f4+ |
|--------------|----------------|

White resigned as 21.Nb1-d2 Rc8xc2+ 22.Kc1xc2 Qf4-c7+ 23.Kc2-b1 Qc7xb7 gives Black a decisive material edge.



Onischuk, A - Volokitin, A
Bundesliga 2010

- | | |
|--------------|---------------|
| 11... | Ke8-e7 |
|--------------|---------------|

The king is forced to wander forward as 11...Nb8-d7 12.Nd2xe4 d5xe4 13.Bg2-h3 is a deadly pin.

- | | |
|------------------|---------------|
| 12.Nd2xe4 | d5xe4 |
| 13.Ra1-d1 | Qd8-d5 |
| 14.0-0 | f7-f5 |

14...c5xd4 15.Rd1xd4 Qd5xe5 16.Bg2xe4 Nb8-c6 gave better hopes of survival, now Onischuk forces open the centre.

- | | |
|------------------|---------------|
| 15.f2-f3 | e4-e3 |
| 16.Rf1-e1 | Ke7-f6 |

Desperately trying to dodge the bullets, but Onischuk gives up his knight, resulting in a crisp finish.

- | | |
|-------------------|---------------|
| 17.d4xc5 | Qd5xe5 |
| 18.Rd1-d6+ | Kf6-e7 |
| 19.Qa4-h4+ | Ke7-f7 |
| 20.Qh4-c4+ | |

Black resigned as 20...Kf7-e7 (or 20...Kf7-f8 21.Rd6-d8+) 21.f3-f4 are rather awkward.