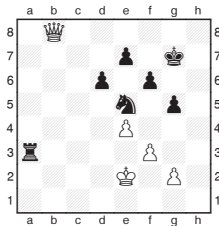


## Michael Adams



## Warm welcome from Ireland

Any event involving ICU president Eamon Keogh, a long-standing supporter and sponsor of Irish chess, will provide great entertainment on and off the board. So the Dun Laoghaire Masters, including the first closed GM tournament ever to be held in Ireland, is a welcome new development. We check out some good moments from the local players below:



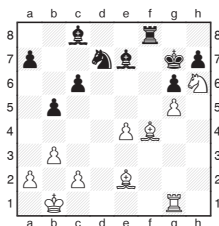
**Bischoff, K - Quinn, M**  
Dun Laoghaire 2010

### 65.Qb8-b2

After 65.Qb8-e8 Ra3-a2+ a draw is on the cards, but this error allows some neat geometry.

**65... Ra3-e3+**

This alert move convinced White to resign as 66.Ke2xe3 Ne5-c4+, 66.Ke2-f1 Re3-e1+ 67.Kf1xe1 Ne5-d3+, or 66.Ke2-d1 Re3-e1+ 67.Kd1-c2 (67.Kd1-d2 Ne5-c4+) 67...Re1-e2+ all win White's queen.



**Astaneh Lopez, A - Collins, S**

Dun Laoghaire 2010

The knight on h6 didn't look great earlier in the game, but now it restricts the Black king effectively and a sneaky withdrawal of the bishop sets up problems on the long diagonal.

**31.Bf4-c1 Nd7-e5**

If 31...Be7-d6 32.Rg1-d1 Bd6-f4 (32...Bd6-e5 33.Be2-g4 is strong) 33.Rd1xd7+ Bc8xd7 34.Bc1-b2+ is a nice tactical finish. Relatively best, although not very appetising was 31...Rf8-f2 32.Be2-g4 Kg7-f8 33.e4-e5.

**32.Bc1-b2 Be7-d6**

**33.Rg1-d1 Bd6-b8**

**34.Be2-g4**

Swapping the bishop causes a complete collapse.

**34... Bc8xg4**

After 34...a7-a5 35.Bg4xc8 Rf8xc8 36.Nh6-g4 Rc8-e8 37.Ng4-f6 Re8-e7 38.Rd1-d8 Bb8-c7 39.Nf6-e8+ is one simple win.

**35.Nh6xg4 Rf8-e8**

**36.Rd1-d7+ Kg7-h8**

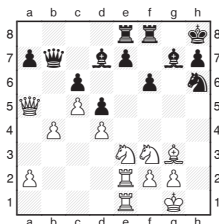
The king can't retreat in the other direction as 36...Kg7-f8 is met by the deadly 37.Bb2-a3+.

**37.Rd7-b7 Bb8-d6**

**38.Ng4-f6**

**1-0**

Simon Ansell was in good form in the accompanying IM event.



**Fitzsimons, D - Ansell, S**  
Dun Laoghaire 2010

**25.Ne3-c2**

The knight is doing a good

job here, so 25.Qa5-c7 was wiser.

**25... Nh6-f5**

**26.Qa5-c7**

26.Bg3-f4 keeps black bottled up.

**26...**

**27.Bg3xc7 Qb7xc7**

**Bg7-h6**  
A crucial move, grabbing control of an important diagonal.

**28.a2-a4 Rf8-g8**

**29.Re1-b1**

It's not particularly easy to give good advice: 29.Nc2-e3 doesn't look pretty, but challenges the influential knight.

**29...**

**30.Nc2-a1 a7-a6**

Not a good sign.

**30...**

**30... Rg8-g4**

Even worse. Black has a

clear plan to execute.

**31.Na1-b3 Re8-c8**

**32.Bc7-b6 Rc8-g8**

With White's bishop banished to the edge of the board the rooks double up.

**33.g2-g3 Bh6-f4**

33...Nf5xg3 34.f2xg3

Rg4xg3+ 35.Kg1-f2 Bd7-f5

looks very dangerous, but increasing the pressure is also strong.

**34.Rb1-b2 h7-h5**

The 'h' pawn battering ram signals the beginning of the end.

**35.Nf3-h2 Rg4-g7**

**36.Kg1-g2 h5-h4**

**37.Kg2-f3 e7-e5**

37...h4xg3 was decisive, but the thematic central advance is hard to resist.

**38.d4xe5 f6xe5**

**39.Bb6-c7**

39.g3xf4 e5-e4+ 40.Re2xe4

d5xe4+ 41.Kf3xe4 Rg8-e8+

leaves the White pieces lacking the co-ordination to resist.

**39...**

**40.f2xg3 h4xg3**

**41.Kf3-f2 Rg7xg3+**

**Bf4-e3+**

41...Rg3-g1 was a more precise finish, but this is good enough.

**42.Re2xe3 Rg3xe3**

**43.Nh2-f1 Re3-e4**

**44.Nb3-d2 Re4-f4+**

**45.Nd2-f3 Rg8-e8**

**0-1**