

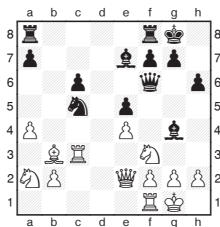
Michael Adams



A moving encounter

This week we have a mixed bag of games that caught my eye, all featuring impressive attacking play.

The first game was played on a train. White suffers some severe disruption on the line:



J. Marikova -

J. Van Foreest

Schach Express Potsdam 2012

18.Bb3-c2

18.Na2-c1 was better preventing Black swinging his knight to the kingside.

18... Nc5-e6

19.Qe2-a6 Ne6-f4

20.Rc3xc6

White is oblivious to the storm clouds on the kingside. 20.Bc2-d1 was better.

20... Nf4-e2+

21.Kg1-h1

21.Qa6xe2 Qf6xc6 is little better.

21... Qf6xf3

The queen is immune for now.

22.h2-h3 Be7-g5

22...Qf3-f4 also wins, but this bishop move sets up a rare but very pretty mating net.

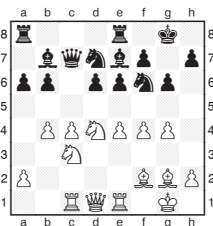
23.Bc2-d1

The minor pieces combine perfectly after 23.g2xf3 Bg4xf3+ 24.Kh1-h2 Bg5-f4 mate.

23... Qf3xh3+

White resigned, as 24.g2xh3 Bg4-f3+ 25.Kh1-h2 Bg5-f4

mate is a now familiar pattern.



R. Pogorelov -

Y. Quesada Perez

Benasque 2010

17.Nc3-d5

With White's pawns having annexed a lot of space, this typical sacrifice enables White to continue to roll forward.

17... e6xd5

18.c4xd5 Qc7-d8

Black was better off returning the piece immediately with 18...Nd7-c5.

19.Nd4-c6 Bb7xc6

The passed pawn is very powerful and White's light-squared bishop dominates a lot of the board.

20.d5xc6 Nd7-f8

21.c6-c7 Qd8-c8

22.e4-e5 d6xe5

23.f4xe5

23.Bg2xa8 Qc8xa8

24.Re1xe5 wasn't bad, but

White understandably wants to retain his potent prelate.

23... Nf6xg4

Black had to fight fire with

fire with the counterblow

23...Be7xb4, retreating

the knight 23...Nf6-d7

24.e5-e6 f7xe6 25.Bg2xa8

Qc8xa8 26.Re1xe6 Nf8xe6

27.Qd1xd7 Ne6xc7

28.Rc1xc7 leaves Black helpless.

24.e5-e6 Ng4xf2

Black's best hope was

24...f7-f5, although White

wins with the clever

25.Bf2xb6 Be7xb4 26.e6-

e7 Bb4xe1 27.Qd1-b3+

Kg8-g7 28.Bb6-d4+

Kg7-h6 29.e7xf8Q+

Re8xf8 30.Bg2xa8 Qc8xa8

31.Rc1xe1 now he is

similarly skewered on the diagonals.

25.e6xf7+

26.Bg2-d5+

27.Re1xe7+

Decisively seizing control of the dark squares as well.

27... Re8xe7

28.Qd1-d4+ Kg7-h6

29.Qd4-h4+ Kh6-g7

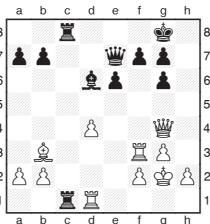
30.Qh4xe7+ Kg7-h6

31.Qe7-h4+ Kh6-g7

32.Bd5xa8 Nf2-h3+

33.Qh4xh3

1-0



S. Tiviakov -

R. Van Kampen

Tata Steel Wijk aan Zee 2013

It looks like a draw is inevitable, but Tivi spots that the doubled 'g' pawns give him some chances on the kingside and he correctly rejects the rook swap.

27.Rd1-d2 Rc8-e8

28.Rd2-e2 Rc1-c7

29.Re2-e4

29.Qg4-h3 was more precise.

29... g6-g5

Black had to defend with the

unappetising 29...Qe7-d8

30.Qg4-h3 g6-g5 31.Re4xe6

Re8xe6 32.Bb3xe6 f7xe6

33.Qh3xe6+ Kg8-h8 34.g3-

g4 g7-g6.

30.Rf3xf7 Qe7xf7

31.Re4xe6 Bd6-e7

There is no defence.

31...Kg8-f8 is simply met by

32.Re6xd6.

32.Re6-e3

The crafty 32.Qg4-e4

Kg8-f8 33.Qe4-h7 was even

better.

32... Rc7-c4

33.Qg4-d7 b7-b5

33...Kg8-f8 resists for a little

longer.

34.Qd7xb5 Re8-c8

35.Bb3xc4 Rc8xc4

36.Re3xe7

1-0