

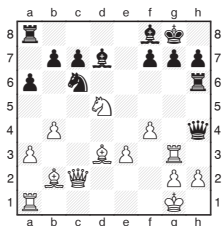
**Michael Adams**



## World Cup in the sticks

With the FIDE Grand Prix cycle running well so far, hopes were high for an impressive World Cup, which attracted a stellar field to Tromso. So it was a pity the event was held in a small, isolated hotel near the airport with only a few shopping centres in the vicinity, rather than in the centre, where the Olympiad will take place next year.

The games below from the early rounds are typical of the tense play in the knockout format. In all, accurate defence under pressure with the clock ticking proves hard to muster.



**A. Shirov - Hou Yifan**  
World Cup Tromso Rapid 2013

**22.Qc2-c3 Qh4xh2+**  
Instead of the tempting capture, Black should have blocked the rook with 22...Bd7-g4.

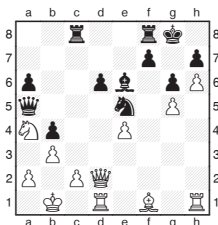
**23.Kg1-f2 f7-f6**  
**24.Nd5xf6+ Rh6xf6**  
**25.Ra1-h1**

Hou Yifan was counting on 25.Qc3xf6 Qh2xg3+ but this deadly deflection is decisive.

**25... Qh2xg3+**  
After 25...Qh2xh1 26.Qc3xf6 Black's king is looking a little lonely.

**26.Kf2xg3 h7-h6**  
**27.Qc3-c4+ Bd7-e6**  
**28.Qc4-c2**

Black resigned, as 28...Rf6-f7 29.Bd3-h7+ Kg8-h8 30.Rh1xh6 is a bit awkward.



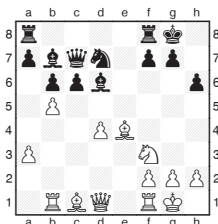
**A. Grischuk - D. Swiercz**  
World Cup Tromso 2013

**27.Bf1-h3 Ne5-f3**  
Black is doing fine after 27...Qa5-c7 with his strong centralised knight, but he unwisely moves it to grab a pawn.

**28.Qd2-f4 Nf3xg5**  
Now 28...Be6xh3 29.Qf4xf3 Bh3-e6 30.Qf3-f6 Qa5-e5 31.Rd1xd6 Qe5xf6 32.g5xf6 was relatively better, although the extra pawn should prove decisive.

**29.Rd1-d5 Be6xd5**  
Black's cause is hopeless, as 29...Qa5-d8 30.Rd5xg5 leaves White a piece to the good, if 29...Qa5-c7 30.Qf4-f6 Qc7xc2+ 31.Kb1-a1 he is powerless to prevent mate.

**30.Qf4-f6**  
Mate on g7 can't be staved off for long so Black resigned.



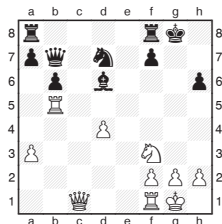
**J. Hammer - S. Movsesian**  
World Cup Tromso Rapid 2013

**16.Bc1xh6 c6xb5**  
The bishop sacrifice is very

imaginative but could have been captured, as 16...g7xh6 17.b5xc6 (17.Qd1-c1 Bd6-f4, and 17.Nf3-h4 Bd6xh2+ 18.Kg1-h1 Qh2-f4 are insufficient) 17...Ra8-e8 (17...Bb7xc6 18.Rb1-c1 is messy) is a key defensive resource.

**17.Be4xb7 Qc7xb7**  
**18.Rb1xb5**  
Much more challenging than saving the bishop, as the rook joins the attack.

**18... g7xh6**  
**19.Qd1-c1**  
Nudging the queen into play with the rook ready to swing across the fifth rank puts Black's king under fire.



**19... Qb7-e4**  
White also has ample play after both 19...f7-f6 20.Qc1xh6 Rf8-f7 21.Rb5-h5 and 19...Kg8-g7 20.Nf3-h4.

**20.Qc1xh6 Bd6-f4**  
The only hope was 20...f7-f6 21.Rf1-e1 Qe4-h7 22.Qh6xh7+ Kg8xh7 23.Rb5-d5 Bd6xa3 24.Rd5xd7+ Kh7-g8.

**21.Qh6-h4 f7-f5**  
21...Rf8-e8 22.Qh4-g4+ wins the knight.

**22.Rf1-e1 Bf4xh2+**  
**23.Qh4xh2 Qe4-g4**  
White is material ahead with the attack, and the rest is one-way traffic.

**24.Re1-e7 Nd7-f6**  
**25.Qh2-h6 Ra8-e8**  
**26.Re7xa7 Rf8-f7**  
**27.Ra7xf7 Kg8xf7**  
**28.Nf3-g5+ Kf7-g8**  
**29.Qh6-g6+ 1-0**