

Michael Adams

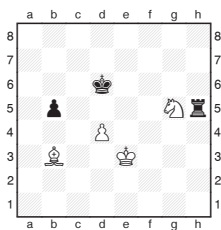


World Cup with tons of intrigue

Hundred-move games are mercifully rare in chess, and those that seriously exceed the ton are even less common. However, there has been an epidemic of these encounters at the World Cup in Norway.

I was impressed by Alexander Grischuk's determination as he ground out a 154-move victory to equalise his match with Le Quang Liem. But the Vietnamese player showed his resilience and won the tie-break.

The next round brought another epic in the rapid tie-breaks:



P. Svidler - Le Quang Liem
World Cup Tromso Rapid 2013

107.Ng5-e4+ Kd6-c6
107...Kd6-e7 was safer.
108.Bb3-e6 Rh5-h1
If 108...b5-b4 109.Ke3-d3 is unpleasant.
109.d4-d5+ Kc6-b6
110.Ke3-d4 Rh1-d1+
111.Kd4-e5 b5-b4

Better was 111...Rd1-e1, as it is a mistake to advance the pawn immediately:
112.d5-d6 Kb6-c6.

112.d5-d6 Kb6-c6
113.Be6-b3 Rd1-e1
After 113...Rd1-d3

114.Bb3-c2 Rd3-e3
115.Bc2-a4+ Kc6-b6
116.Ke5-d4 White retains control.

114.Bb3-a4+ Kc6-b6
115.Ke5-d5 Re1-h1
116.Ne4-f6 Rh1-h3
117.Nf6-d7+ Kb6-a5
118.Nd7-c5 b4-b3

There is no defence, as 118...Ka5-b6 119.d6-d7 Rh3-h8 120.Nc5-e6 wins.

119.d6-d7 Rh3-h5+
120.Kd5-c4 Rh5-h4+
121.Kc4xb3 Rh4-d4
122.Kb3-c3 Rd4-d5
123.Kc3-c4 Rd5xd7

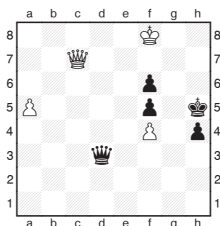
123...Rd5-d6 124.Nc5-b7+, or 123...Rd5-d2 124.Nc5-b3+ pick up the rook.

124.Ba4xd7 Ka5-b6
Black's king must be driven to a corner where the square is controlled by White's bishop. In this case it's simple to shepherd the king towards a8.

125.Nc5-e6 Kb6-a5
126.Kc4-c5 Ka5-a6
127.Bd7-c6 Ka6-a5
128.Ne6-d4 Ka5-a6
129.Nd4-b5 Ka6-a5
130.Nb5-d6 Ka5-a6
131.Bc6-b5+ Ka6-a7
132.Kc5-c6 Ka7-b8
133.Kc6-b6 Kb8-a8
134.Bb5-a6 Ka8-b8
135.Nd6-c4

1-0
An impressive effort by Peter, who marshalled his minor pieces superbly.

In the much quicker 10 minutes-plus-10 seconds-per-move time limit, an even more astonishing game took place. The level of play in all three trials of endurance was highly commendable, but this one was exceptional:



A. Morozevich - E. Tomashevsky
World Cup Rapid Tromso 2013

143.Kf8-g7
The hard to find 143.Qc7-f7+ Kh5-g4 144.Qf7-a2 h4-h3 145.a5-a6 should hold.

143... h4-h3
144.Kg7xf6 Kh5-g4

The sneaky 144...Qd3-d4+ 145.Kf6xf5 Qd4-d3+ 146.Kf5-f6 h3-h2 was more efficient.

145.Qc7-g7+ Kg4-f3
146.Qg7-b7+ Qd3-e4
147.a5-a6

147.Qb7-b3+ Kf3-g2 148.Qb3-g8+ Kg2-f2 149.Qg8-a2+ Qe4-e2 and White runs out of checks.

147... h3-h2
148.Qb7xe4+ f5xe4
149.a6-a7 h2-h1Q
150.a7-a8Q Qh1-h6+
151.Kf6-e7

Black's pawn also can't be stopped after 151.Kf6-e5 Qh6xf4+ 152.Ke5-d4 Qf4-d6+ 153.Kd4-c3 Qd6-d3+ 154.Kc3-b2 Kf3-e2.

151... Qh6xf4
152.Qa8-d5 Kf3-g3
153.Qd5-g8+ Qf4-g4
154.Qg8-b8+

Progress is slow but inevitable 154.Qg8-b3+ Kg3-f2 155.Qb3-a2+ Qg4-e2 156.Qa2-f7+ Kf2-e1.

154... Kg3-f3
155.Qb8-h2 e4-e3
156.Qh2-h1+ Kf3-f2
157.Qh1-h2+ Qg4-g2
158.Qh2-f4+ Qg2-f3
159.Qf4-h4+

159.Qf4-d4 keeping the queen centralised was a bit tougher.

159... Kf2-f1
160.Qh4-c4+ e3-e2
161.Ke7-d8 Qf3-f5
162.Kd8-c7 Kf1-f2
163.Qc4-h4+ Kf2-e3
164.Qh4-e1 Qf5-c2+
165.Kc7-b8 Qc2-b3+
166.Kb8-a7 Ke3-d3
167.Qe1-g3+ Kd3-c2
168.Qg3-e1 Qb3-e3+
169.Ka7-a6 Qe3-d2
0-1