

Michael Adams



Short excels at Olympiad

The English team had a promising start to the Olympiad, but two defeats in winnable matches in rounds eight and nine proved costly as we paid the price for too few players in form.

Aside from the convincing victories against the modest opposition of Andorra and Uruguay, we won only two individual games with the exception of Nigel Short, who, in his 15th Olympiad, turned in an excellent performance with 7.5/10.

N. Short - A. Fier Istanbul Olympiad 2012

- | | |
|------------------|---------------|
| 1.e2-e4 | c7-c5 |
| 2.Nb1-c3 | d7-d6 |
| 3.f2-f4 | g7-g6 |
| 4.Ng1-f3 | Bf8-g7 |
| 5.Bf1-b5+ | Bc8-d7 |
| 6.a2-a4 | a7-a6 |

The beginning of Black's problems 6...Nb8-c6 or 6...Ng8-f6 was better.

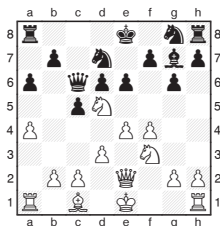
- 7.Bb5xd7+** **Qd8xd7**

Black wants to develop his knight to c6, but should have settled for 7...Nb8xd7.

- 8.Nc3-d5** **Qd7-c6**

The queen is awkwardly placed here, so 8...Qd7-d8 was better.

- 9.d2-d3** **Nb8-d7**
10.Qd1-e2 **e7-e6**



After 10...Ng8-f6, White

might try 11.c2-c4, but this still looks preferable.

- 11.a4-a5** **O-O-O**

The king is not happy, so 11...Ng8-f6 was indicated.

- 12.Nd5-e3** **d6-d5**
13.O-O **Ng8-h6**

13...d5xe4 14.d3xe4
Qc6xe4 is met by 15.Nf3-g5.

- 14.e4-e5** **Nh6-f5**

14...f7-f6 was worth a look.

- 15.c2-c4** **d5-d4**

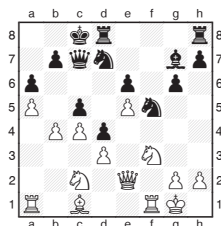
It's natural to try to keep lines closed, but in this case 15...d5xc4 16.Ne3xc4 Kc8-b8 was better.

- 16.Ne3-c2** **f7-f6**
17.b2-b4

Nigel forces open lines on the queenside and the play becomes very one-sided, as Black's king runs into trouble whilst White's remains perfectly safe.

- 17...** **f6xe5**
18.f4xe5 **Qc6-c7**

White is also dominant after 18...c5xb4 19.g2-g4 Nf5-h6 20.Nc2xd4 Qc6-c5 21.Kg1-h1 Rh8-e8 22.Nd4-c2 Nh6xg4 23.d3-d4 Qc5-c7 24.Nc2xb4.



- 19.b4-b5** **Nd7xe5**
20.b5xa6 **b7xa6**
21.Ra1-b1 **Ne5-c6**
22.Rb1-b6

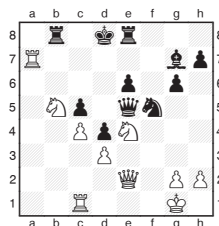
The White rook is a wrecking ball in the Black ranks.

- 22...** **Kc8-d7**
23.Nf3-g5

Transferring the knight to a great slot in the centre.

- 23...** **Rh8-e8**
24.Rb6xa6 **Rd8-b8**
25.Ng5-e4 **Nc6xa5**

- 26.Nc2-a3** **Na5-b3**
27.Na3-b5 **Nb3xc1**
28.Rf1xc1 **Qc7-e5**
29.Ra6-a7+ **Kd7-d8**



- 30.Ne4-g5**
- There was a quicker finish with 30.Qe2-d2 Re8-e7 31.Qd2-a5+ Kd8-e8 32.Nb5-d6+ Nf5xd6 33.Ra7xe7+ Ke8xe7 34.Qa5-c7+.
- 30...** **Nf5-h6**

Black could have allowed the pretty 30...Qe5xe2 31.Ng5-f7+ Kd8-c8 32.Ra7-c7 mate, but fights on.

- 31.Qe2xe5** **Bg7xe5**
32.Rc1-e1 **Be5-f4**
33.Ng5xe6+ **Kd8-c8**
34.Re1-e4 **Bf4-e3+**
35.Kg1-f1 **Rb8-b6**
36.Ne6xc5

36.Ra7-c7+ Kc8-b8 37.Ne6xc5 Re8-f8+ 38.Kf1-e1 Rb6xb5 39.Nc5-a6+ was quicker.

- 36...** **Re8xe4**
37.Nc5xe4 **Kc8-d8**
38.Ra7xh7 **Nh6-g4**
39.h2-h3 **Ng4-h2+**

Entombing the knight isn't a great practical try. 39...Ng4-f6 gives more hope.

- 40.Kf1-e2** **g6-g5**
41.g2-g4 **Rb6-a6**
42.Rh7-a7 **Ra6-h6**
43.Nb5-d6 **Rh6-e6**

43...Rh6xh3 44.Ne4-c5 leaves Black unable to prevent the death blow.

- 44.c4-c5** **Be3-f4**
45.Ke2-f2 **Bf4xd6**
46.c5xd6 **Nh2xg4+**
47.h3xg4 **Re6xd6**
48.Ra7-a8+

Black was optimistic to hope for 48.Ne4xd6 stalemate.

1-0