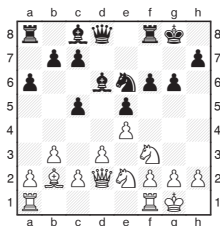


**Michael Adams**



## Stars out for the Classic

The London Chess Classic begins today: for more details see [londonchessclassic.com](http://londonchessclassic.com). The top section begins later in the week, and the rapidplay format has allowed for an enlarged field. Here are some impressive games by debutants:



**L. McShane - P. Svidler**  
European Team  
Championship Warsaw 2013

**15.c2-c3 f6-f5**  
A radical response to the planned d3-d4. This looks risky, but Black's well-placed minor pieces justify the finely judged counter.

**16.e4xf5 g6xf5**  
**17.Qd2-h6**  
It was better to try 17.c3-c4 e5-e4 18.Nf3-e1, or 17.Ne2-g3.

**17... Rf8-f6**  
**18.Qh6-e3**  
18.Qh6-h4 Qd8-f8 preparing Rf6-h6 is awkward so White's queen has to withdraw immediately, which can't be a good sign.

**18... Bc8-d7**  
**19.d3-d4**  
This doesn't work out well, but it is hard to suggest something better.

19.Nf3xe5 f5-f4 20.Qe3-e4 Ne6-g5 21.Qe4xb7 Bd6xe5 22.Qb7-d5+ Ng5-f7 wins a piece and 19.c3-c4 f5-f4 20.Qe3-d2 Rf6-g6 gives

Black a vicious attack.

**19... e5-e4**  
**20.Nf3-e5 Bd6xe5**  
**21.d4xe5 f5-f4**

The key idea: with White's bishop out of the action Black's becomes a monster. 21...Rf6-g6 22.Ra1-d1 Qd8-e7 23.Ne2-f4 Ne6xf4 24.Qe3xf4 is nothing special.

**22.Qe3xe4 Bd7-c6**  
**23.Qe4-c2**  
The desperate 23.Qe4xc6 is best met by 23...b7xc6 24.Ra1-d1 Ne6-d4 25.c3xd4 f4-f3.

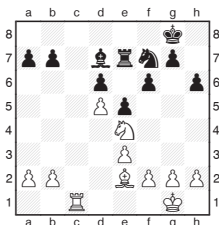
**23... Rf6-h6**  
**24.f2-f3 Qd8-h4**  
**25.h2-h3 Ne6-g5**  
**26.Qc2-f5**

There is no good defence. 26.Bb2-c1 Ng5xh3+ 27.g2xh3 Kg8-h8 28.Qc2-f5 Ra8-g8+ 29.Kg1-h2 Bc6-d5 30.Bc1xf4 Bd5-e6 wins easily.

**26... Rh6-g6**  
**27.Ne2xf4**

The natural 27.Kg1-h2 is refuted in a cascade of sacrifices. 27...Ng5xf3+ 28.g2xf3 Ra8-f8 29.Qf5-d3 Rg6-g3 30.Ne2-g1 (30.Ne2xg3 Qh4xg3+ 31.Kh2-h1 Kg8-h8 is similar) 30...Kg8-h8 31.c3-c4 Rg3xh3+ 32.Ng1xh3 Qh4-g3+ 33.Kh2-h1 Qg3xh3+ 34.Kh1-g1 Qh3-g3+ 35.Kg1-h1 Qg3-h4+ 36.Kh1-g2 Rf8-g8+ and mate next turn.

**27... Qh4xf4**  
White resigned, as 28.Qf5xf4 Ng5xh3+ 29.Kg1-h2 Nh3xf4 leaves him a piece behind.



**B. Gelfand - A. Moiseenko**  
World Cup Tromso 2013

**23.Be2-h5**  
Targeting the knight, which

is doing its best to hold Black's position together.

**23... Bd7-e8**  
**24.Rc1-c8 Kg8-h7**  
**25.Rc8xe8 Re7xe8**  
**26.Bh5xf7 Re8-c8**

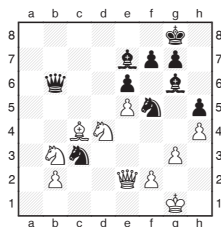
The only hope for counterplay is to go after the queenside pawns. Boris finds a neat finish.

**27.g2-g4 Rc8-c2**  
**28.Ne4xd6 Rc2xb2**  
**29.Bf7-e6 Rb2xa2**  
**30.Nd6-f7 Ra2-d2**  
**31.d5-d6 Kh7-g6**

The alternative 31...Kh7-g8 is met by 32.Nf7-d8+ Kg8-f8 33.Nd8xb7.

**32.e3-e4 a7-a5**  
**33.Be6-d5**

Black resigned, as after 33...Rd2xd5, not the awful blunder 34.e4xd5 Kg6xf7, but the pretty 34.Nf7-h8+ Kg6-h7 35.e4xd5 a5-a4 36.d6-d7 and Black's pawn is too late.



**F. Caruana - E. Tomashevsky**  
FIDE Grand Prix 2013

**27.b2xc3 Be7-c5**  
27...Qb6-c7 was better. Now Fabiano produces a crafty combination:

**28.Nb3xc5 Qb6xc5**  
**29.Nd4xe6 f7xe6**  
**30.Bc4xe6+ Kg8-h8**

30...Kg8-f8 31.Qe2-e4 Nf5xh4 (31...Nf5-e7 32.Qe4-a8+ Bg6-e8 33.Qa8-f3+ wins) 32.Qe4xh4 Qc5xe5 gave some hope.

**31.Be6xf5 Bg6xf5**  
**32.Qe2xh5+ Bf5-h7**  
**33.Qh5-e8+ Bh7-g8**  
**34.e5-e6 Kh8-h7**  
**35.e6-e7 Qc5-e5**

**36.Qe8-f8**  
Black resigned, as 36...Qe5-e1+ 37.Kg1-h2 Bg8-d5 38.Qf8-f5+ g7-g6 39.Qf5xd5 is decisive.