

Michael Adams

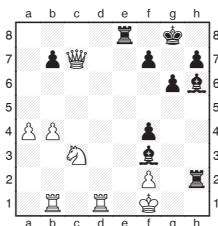


Classic play as Carlsen beats world

The London Chess Classic concludes over the next three days and there's an all-English pairing today as I play Luke McShane, and the player commentator is the highly instructive Vladimir Kramnik. An interesting last round on Monday features the Carlsen vs Anand match-up with Gawain Jones commentating. Visit www.londonchessclassic.com for more details.

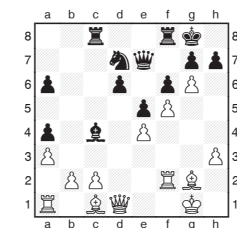
Gawain was in good form before the event, tying for first with Mark Hebden at the sociable Kilkenny Masters.

29.Bf1-g2 Rg5xg2+
30.Kg1-f1 Rg2xh2
Mate can only be staved off by desperate measures.



31.Nc3-e2 Re8xe2
32.Rd1-d8+ Bh6-f8
33.Rd8xf8+ Kg8xf8
34.Qc7-c5+ Re2-e7
35.Qc5-c8+ Re7-e8
36.Qc8-c5+ Kf8-g8
0-1

World number one Magnus Carlsen warmed up with a triumph in Mexico. As well as his tournament victory, he also won an interesting exhibition game where Black's moves were decided by an internet vote from three possible options.



M.Carlsen - The World
Mexico City 2012

20... h7-h6
Black could have tried 20...h7xg6 21.f5xg6 Rf8-d8, as the knight will be a robust defender on f8. In the game, the advanced White pawn chain is a constant menace to Black's king.
21.Bc1-e3
21.b2-b3 was also interesting.
21... Nd7-c5
22.Rf2-d2 Rf8-d8
23.Qd1-e1 Qe7-b7
24.Ra1-d1

Excellent judgment. Although a couple of Carlsen's queenside pawns get snaffled, the exchange

of rooks emphasises the back-rank difficulties.

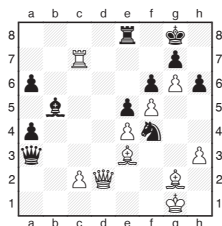
24... Qb7xb2
25.Rd2xd6 Rd8xd6
26.Rd1xd6 Qb2xa3
27.Qe1-d2 Nc5-d3
28.Rd6-d7

Not 28.Rd6xd3 Bc4xd3 29.c2xd3 Qa3-c3 when Black's passed pawn carries the day.

28... Bc4-b5
29.Rd7-d5 Nd3-f4
If 29...Bb5-c4 30.Rd5-a5 keeps the pressure on.

30.Rd5-c5 Rc8-e8
Black could have hung on with 30...Rc8-a8 31.Kg1-h2 Kg8-h8, although his position remains on the critical list.

31.Rc5-c7



31... Qa3-a1+
31...Qa3-a2 is met by the very powerful centralisation. 32.Qd2-d6 and Black quickly perishes e.g. 32...Qa2-b1+ 33.Kg1-h2 Qb1-e1 34.Rc7xg7+ Kg8xg7 35.Qd6-c7+.

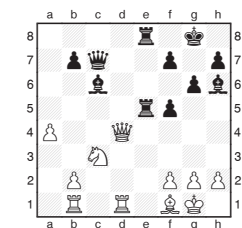
32.Kg1-h2 Kg8-h8
33.c2-c4
The bishop is trapped and the game is swiftly concluded.

33... a4-a3
If 33...Nf4xg2 34.Be3xh6 Ng2-h4 35.Bh6xg7+ Kh8-g8 36.Qd2-d5+ mates.

34.c4xb5 Qa1-b2
34...a6xb5 35.Qd2-d7 wins immediately.

35.b5xa6 Qb2xd2
36.Be3xd2 Nf4-e2
37.Rc7-c4 a3-a2
38.Rc4-a4
1-0

You can donate to the tournament's charity Chess in Schools and Communities: www.chessinschools.co.uk/ donate.



S. Collins - G. Jones
Kilkenny 2012

25... f5-f4
Pushing forward on the kingside where White's pieces have little influence and Black has a lot of assets.

26.b2-b4 Re5-g5
27.Qd4-c4

Collins could have avoided immediate disaster with 27.Qd4-d3, as 27...f4-f3 28.g2-g3 doesn't lead anywhere.

27... Bc6xg2
It's always pleasant to sacrifice your queen. After a forcing sequence, White's monarch becomes hopelessly penned in.
28.Qc4xc7 Bg2-f3+