

Michael Adams



Attack at the double

This week we look at a couple of contrasting attacking games. In the first, White makes an unconventional start to the game, but from then on, all flows smoothly. The second game features more classical patterns, but the finish is just as appealing:

M. Bosboom - H. Sonntag
Oberliga Germany 2010

- 1.c2-c4** **e7-e6**
2.Ng1-f3 **d7-d5**
3.e2-e3 **Ng8-f6**
4.a2-a3 **Bf8-e7**
5.g2-g4 **0-0**
6.Rh1-g1 **c7-c5**

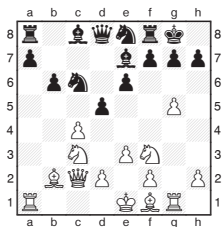
White's opening play looks strange, but is part of a cunning plan to point his pieces in the direction of Black's king.

- 7.b2-b4** **c5xb4**
 7...Nb8-c6 looks wiser, aiming for quick development.

- 8.a3xb4** **Be7xb4**
9.Bc1-b2 **Nb8-c6**
10.Qd1-c2 **Bb4-e7**
11.Nb1-c3 **b7-b6**

Now was a good moment for 11...Nc6-b4, disrupting White's pieces.

- 12.g4-g5** **Nf6-e8**



- 13.Ra1-a4** **Nc6-b4**

After 13...Bc8-b7 the line 14.c4xd5 e6xd5 15.Nc3xd5 Qd8xd5 16.Ra4-h4

g7-g6 17.Bf1-c4 Qd5xf3 18.Qc2xg6+ h7xg6 19.Rh4-h8 mate shows the dangers facing Black.

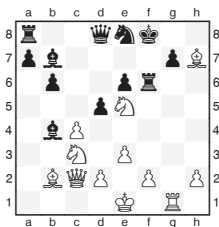
- 14.Ra4xb4** **Be7xb4**
 Bosboom isn't worried about his material deficit, as his remaining forces are so influential.

- 15.Bf1-d3** **f7-f5**
 Despite the weakened long diagonal, 15...g7-g6 was better.

- 16.g5xf6** **Rf8xf6**
 The other recaptures 16...Ne8xf6 17.Bd3xh7+ Nf6xh7 18.Nc3xd5 Rf8-f7 19.Nf3-e5 and 16...Qd8xf6 17.Bd3xh7+ Kg8-h8 18.Rg1-g3 also look very hazardous.

- 17.Bd3xh7+** **Kg8-f8**
 Or 17...Kg8-h8 18.Nf3-g5.

- 18.Nf3-e5** **Bc8-b7**



- 19.Qc2-a4**
 Using the whole board to keep the assault going.

- 19...** **Bb4-e7**
 19...a7-a5 would have survived a little longer.

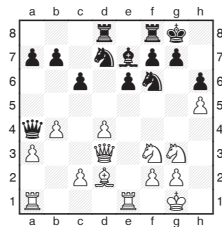
- 20.Ne5-d7+** **Kf8-f7**
21.c4xd5 **e6xd5**
22.Qa4-g4 **Be7-d6**

After 22...Ra8-c8, there are several winning options, but perhaps the calm 23.Nc3-b5, continuing the sequence of quiet moves is the most thematic.

- 23.Nc3-b5** **Kf7-e7**
24.Bb2xf6+ **g7xf6**

Black resigned rather than allowing the pleasing dénouement 25...Ne8xg7

26.Rg1xg7+ Ke7-e8 27.Nb5xd6 mate, or 26...Ke7-e6 27.Nb5-d4 mate.



A. Kosteniuk - D. Charochkina

Russian Women's Championship Nizhny Novgorod 2013

- 17.Ng3-f5** **Rf8-e8**
18.Re1xe6 **f7xe6**

It was better to decline the gift with 18...Be7-f8 securing the kingside.

- 19.Nf5xg7** **Nd7-f8**

Black is also in trouble after the alternatives 19...Kg8xg7 20.Bd2xh6+ Kg7-h8 21.Bh6-g7+ Kh8xg7 22.Qd3-g6+ Kg7-h8 23.Nf3-g5 or 19...Be7-f8 20.Ng7xe8 Rd8xe8 21.Qd3-g6+ Bf8-g7 22.Bd2xh6

- 20.Ng7xe8** **Rd8xe8**
21.Nf3-e5

There is no need to hurry, Kosteniuk brings more pieces into the attack.

- 21...** **Kg8-g7**
 After 21...Qa4-b5 22.c2-c4 keeps the queen locked out of the action.

- 22.Ra1-e1** **Nf6-h7**
23.Re1-e3

23.Qd3-g3+ is an even quicker kill, but introducing the rook into the attack is also good enough.

- 23...** **Be7-f6**
24.Re3-g3+ **Nh7-g5**
25.f2-f4 **Re8-d8**
26.Ne5-f3 **Nf8-h7**
27.f4xg5 **h6xg5**
28.Nf3xg5 **Bf6xd4+**
29.Kg1-h1
1-0

Happy New Year!