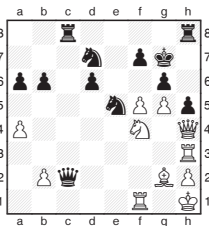


**Michael Adams**



## Dazzling variations in Holland

The traditional Wijk aan Zee event has thrown up the usual array of appetising encounters. However, the following game stood out for me as the prettiest so far, containing a spectacular finale and with many dazzling variations offstage:



**P. Harikrishna - L. Van Wely**  
Tata Steel A, Wijk aan Zee 2013

**33.f5xg6 f7xg6**  
**34.Nf4-e6+**

The knight leaps into the heart of Black's position and wreaks havoc in every direction.

**34... Kg7-g8**

It looks more natural to play 34...Kg7-h7, but there is a pretty refutation: 35.Bg2-e4 Qc2-e2 (35...Qc2-c4 36.Qh4xh5+) 36.Be4xg6+ Ne5xg6 (If 36...Kh7xg6 the easy-to-miss knight retreat 37.Ne6-f4+ wins the queen) 37.Rf1-f7+ Kh7-g8 38.Rf7-g7 mate.

**35.Bg2-d5 Qc2-d2**  
**36.Qh4-e4 Rc8-c1**

The best defence was 36...Rh8-h7, when it would have been virtually impossible to find the most clinical kill 37.Rh3-c3 (37.Rh3-d3 Qd2xb2 is less

clear) 37...Rc8xc3 38.Ne6-f4+ (38.b2xc3 Kg8-h8 is less efficient) 38...Kg8-g7 (38...Kg8-h8 39.Nf4xg6+ Kh8-g7 40.Ng6xe5 Nd7xe5 41.b2xc3 Qd2xg5. Now the precise 42.Qe4-d4 is the only way to break Black's resistance, pinning the knight, 42...Kg7-h6 43.h2-h4 Qg5-e7 (43...Qg5-g3 44.Qd4-d2+ Kh6-g7 45.Rf1-g1 and 43...Qg5-d8 44.Rf1-f5 Ne5-g6 45.Rf5-f6 Rh7-e7 46.Bd5-f7 also fail) 44.Rf1-f5 Ne5-g6 45.Qd4-d2+ Kh6-g7 46.Rf5-f7+ Qe7xf7 47.Bd5xf7 Kg7xf7.) 39.b2xc3 Nd7-c5 40.Bd5-b3. This unbelievable, quiet move, leaving the queen en prise, proves decisive 40...Nc5xe4 (40...h5-h4 41.Qe4-b7+ Nc5-d7 42.Nf4-e6+) 41.Nf4-e6+ Kg7-g8 42.Rf1-f8 mate.

**37.Rh3-f3 Kg8-h7**

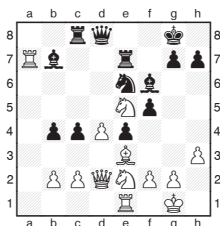
**38.Rf3-f7+**

There was a dual finish with 38.Qe4xg6+ Ne5xg6 (38...Kh7xg6 39.Bd5-e4 mate) 39.Rf3-f7+ Kh7-g8 40.Rf7-g7 mate.

**38... Ne5xf7**

**39.Qe4xg6+**  
Black resigns, as a striking pure mate occurs after 39...Kh7xg6 40.Bd5-e4.

In this game from the second group, again the attacker's momentum proves far too much to handle.



**J. Smeets - A. Naiditsch**  
Tata Steel B, Wijk aan Zee 2013

**27... c4-c3**

**28.b2xc3 b4xc3**

**29.Qd2-c1**  
White can't capture due

to 29.Ne2xc3 Bf6xe5 30.d4xe5 Re7-d7.

**29... g7-g5**

**30.g2-g3**

The computer points out a hidden resource: 30.Qc1-a3 intending to meet 30...f5-f4 with the sneaky 31.Ne5-g4 Bf6-g7 32.d4-d5.

**30... Re7-g7**

**31.Kg1-h2**

31.Qc1-b1 was the last hope.

**31... f5-f4**

**32.g3xf4 g5xf4**

**33.Be3xf4 Ne6xd4**

**34.Re1-d1**

34.Ra7xb7 was the best try.

**34... Bf6xe5**

**35.Ne2xd4**

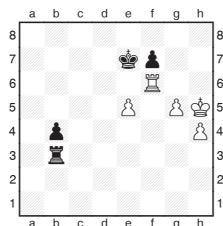
35.Ra7xb7 was still relatively best. 35.Bf4xe5 Nd4-f3+ 36.Kh2-h1 Qd8-h4 isn't very healthy.

**35... Qd8-g5**

As well as this deadly blow, Black also had 35...Qd8-h4.

**O-1**

We finish with some typically smooth endgame technique from the evergreen Jan Timman.



**J. Timman - J. Smeets**  
Tata Steel B, Wijk aan Zee 2013

**52.e5-e6**

White should win after 52.Rf6-b6 Rb3-e3 53.Rb6xb4 Re3xe5 54.Kh5-h6, but Jan's solution is much neater as his two connected pawns easily secure the point.

**52... f7xe6**

**53.Kh5-g6 Rb3-h3**

**54.h4-h5 b4-b3**

**55.h5-h6**

Black resigned, as 55...b3-b2 56.Rf6-f7+ Ke7-d6 57.Rf7-b7 Rh3-h2 58.h6-h7 e6-e5 59.Rb7xb2 wins.