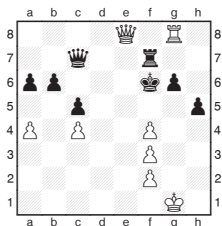


Michael Adams



Short sharp in Sweden

The Sigeman and Co event benefited from a judicious selection of players, young and old, who produced some great chess. All the players tasted defeat, but once the dust had settled the two players in the first game below and local favourite Nils Grandelius shared first prize.



R. Rapport - N. Short
Sigeman & Co Malmo 2013

White's active pieces prove decisive, but it's not easy to calculate the variations precisely, as Black's monarch can make a run for it in many variations.

44.Kg1-g2

Missing a neat finish with 44.Qe8-e4 Rf7-g7 45.Rg8-f8+ Rg7-f7 46.Rf8-c8 Qc7xc8 47.Qe4-e5 mate.

44... Qc7-d6
45.Kg2-h1 Qd6-c7

The best chance was to grab the pawn, although 45...Qd6xf4 46.Qe8-c6+ Kf6-e5 47.Rg8-e8+ Ke5-f5 48.Re8-e1 Kf5-g5 49.Re1-g1+ Kg5-h4 50.Rg1-g3 leaves Black's king in dire straits, if 45...Qd6-d1+ the triangulation 46.Kh1-h2 Qd1-d6 47.Kh2-g2 leaves Black struggling to find a move.

46.f4-f5

It was still possible to play 46.Qe8-e4 Rf7-g7 47.Rg8-f8+ Rg7-f7 48.Rf8-c8, but

with the king off the 'g' line, the game move is equally strong.

46... g6xf5
47.Rg8-g1 f5-f4

Black's king is hunted down in all lines: 47...Rf7-g7 48.Qe8-f8+ Rg7-f7 49.Qf8-h6+ Kf6-e7 50.Rg1-e1+ Ke7-d8 51.Qh6-h8+ Kd8-d7 52.Qh8-e8+ Kd7-d6 53.Qe8-e6 mate.

48.Qe8-h8+ Kf6-f5
Or 48...Rf7-g7 49.Qh8-h6+.

49.Qh8xh5+ Kf5-f6

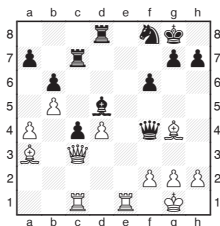
Another variation goes 49...Kf5-e6 50.Qh5-g6+ Ke6-e7 51.Rg1-e1+ Ke7-f8 52.Qg6-h6+ Rf7-g7 53.Qh6-f6+ Kf8-g8 54.Re1-e8+ Kg8-h7 55.Qf6-h4+ Kh7-g6 56.Qh4-g4+.

50.Qh5-g5+ Kf6-e6
51.Rg1-e1+ Ke6-d6

As 51...Ke6-d7 52.Qg5-d5+ is hopeless, Nigel sportingly allows a pretty finish.

52.Qg5-d5 mate.

Short rebounded strongly in the victory below, starting a three-game winning streak.



N. Short - N. Grandelius
Sigeman & Co Malmo 2013

23.h2-h3 Bd5-f7

Black is under pressure from the powerful bishops and it is essential to keep the bishop on its powerful blockading post with 23...Rc7-f7.

24.Rc1-d1

The sacrifice 24.d4-d5 is also strong, emphasising the drawbacks of Black's last move, 24...Rd8xd5 25.Rc1-d1 Rd5xd1 26.Re1xd1 h7-h5 27.Rd1-d8 h5xg4 28.Ba3xf8 shows the dangers facing Black.

24... Nf8-g6
Black had to try 24...h7-h5

25.Bg4-f3 Nf8-e6 26.Ba3-c1 Qf4-d6 27.d4-d5 Ne6-g5 now the central pawn carries all before it.

25.d4-d5 h7-h5

Black's queen is embarrassed after 25...Rd8xd5 26.Rd1xd5 Bf7xd5 27.g2-g3 Qf4-g5 28.Ba3-c1.

26.d5-d6 h5xg4

Black's position has totally collapsed 26...Rc7-d7 27.Ba3-c1 traps the queen.

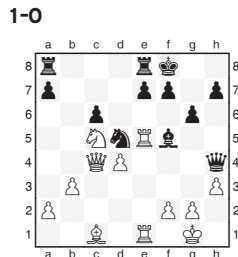
27.g2-g3 Qf4-e5

28.Qc3xe5 Ng6xe5

29.d6xc7 Rd8-e8

30.Re1xe5

1-0



I. Sokolov - H. Tikkanen
Sigeman & Co Malmo 2013

28.g2-g4

Tempting, but White could also increase the pressure with the sneaky 28.Nc5-b7.

28... f7-f6

After 28...Bf5-c8 29.Qc4-d3 f7-f6 30.Re5-h5 g6xh5 31.Qd3xh7 is a pleasing finish.

29.g4xf5 f6xe5

30.Nc5-e6+ Kf8-g8

31.Qc4xc6 Nd5-f6

Black misses his chance to fight back with 31...Nd5-b4 32.Qc6-c4 (32.Qc6-f3 Qh4-h5) 32...Ra8-c8 33.Qc4xb4 Rc8-c2.

32.d4xe5 Qh4xh3

32...Ra8-c8 33.Qc6-g2 is no better.

33.e5xf6 e7xf6

33...Qh3-g4+ 34.Qc6-g2

Qg4xg2+ 35.Kg1xg2 e7xf6

36.Bc1-e3 is hopeless.

34.Qc6-c4 Kg8-h8

35.f5xg6 h7xg6

36.Re1-e4 g6-g5

37.Bc1xg5

Black resigned, as 37...f6xg5 38.Qc4-d4+ Kh8-h7 39.Qd4-g7 is mate.