

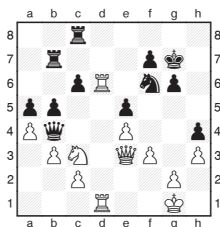
**Michael Adams**



## Rapids are so remote

FIDE have shown little interest in rapid and blitz chess over the last few years – surprising, given their occasional attempts to speed up the traditional time limit. The long-overdue introduction of a rapid and blitz rating list is a step in the right direction, but locating the World Rapid and Blitz championships in Khanty-Mansiysk, in remote central Russia, was hardly a way to promote this format of the game.

Although the competition was open to players with over 2500 on any of the three rating lists, an entry of 58 in the World Rapid despite the entry date being extended shows the drawbacks to such inaccessible venues.



**I.Nepomniachtchi - I.Smirin**  
FIDE World Rapid  
Khanty-Mansiysk 2013

### 37.Kg1-h2

A sneaky move, but 37.Nc3-a2 Qb4-a3 38.Qe3-c3 hitting e5 and embarrassing Black's queen was also good.

### 37... Nf6-d5

This was hard to resist, especially as 37...b5xa4 38.Qe3-g5 is no fun.

### 38.e4xd5 Qb4xd6

### 39.Nc3-e4 Qd6-b8

The other queen retreat is no better: 39...Qd6-d8 40.d5xc6 Qd8xd1 41.c6xb7

Rc8-b8 42.Qe3-c5 Rb8xb7 43.Qc5xe5+ Kg7-h7 44.Ne4-f6+ Kh7-h8 45.Nf6-e8+ f7-f6 46.Qe5xf6+ Kh8-h7 47.Qf6xh4+ Kh7-g8 48.Qh4-e4 reaps a serious pawn harvest.

### 40.d5-d6 b5xa4

### 41.Qe3-g5

Menacing Black's king. This is much more testing than 41.b3xa4.

### 41... a4xb3

### 42.c2xb3 Rb7-b5

Black's position is difficult.

42...Rb7xb3 43.d6-d7

Rc8-d8 44.Qg5-f6+ Kg7-g8

45.Ne4-g5 wins. The best try is 42...Rc8-f8

but 43.Qg5-f6+ (Not

43.Qg5xe5+ f7-f6) 43...Kg7-g8

44.Qf6xh4 is unpleasant.

### 43.Qg5-f6+ Kg7-g8

### 44.Qf6xh4 Kg8-g7

44...Rc8-d8 is well met by

45.Qh4-h6.

### 45.Qh4-f6+ Kg7-g8

### 46.h3-h4

Not the only winning option, but opening up Black's king further is very practical.

### 46... Rb5-d5

### 47.h4-h5 g6xh5

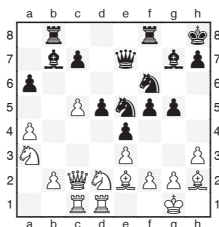
47...Rd5xd1 48.h5-h6 leaves

Black helpless.

### 48.Qf6-g5+ Kg8-f8

### 49.Qg5-h6+

1-0



**K.Akbaev - V.Bologan**

FIDE World Rapid  
Khanty-Mansiysk 2013

### 22.b2-b4 f5-f4

Black opens lines to exploit his strong central presence.

### 23.e3xf4 g5xf4

### 24.Bh2xf4 d5-d4

### 25.Be2-f1

White had to fight back with 25.Bf4xe5 Qe7xe5

26.c5-c6.

### 25... d4-d3

### 26.Qc2-b1 Nf6-g4

### 27.Bf4-g3

White is already sunk. 27.h3xg4 Rf8xf4 is no better.

### 27... Ng4xf2

### 28.Rd1-e1

28.Bg3xf2 Rf8xf2

29.Kg1xf2 Ne5-g4+

30.h3xg4 Qe7-h4+ 31.g2-g3 Rb8-f8+ 32.Kf2-g2 e4-e3+ decimates White's position.

### 28... Qe7-g5

### 29.Bg3xf2 Rf8xf2

### 30.Nd2xe4 Rf2xf1+

The direct 30...Ne5-f3+

31.Kg1xf2 Bg7-d4+ is even quicker.

### 31.Kg1xf1

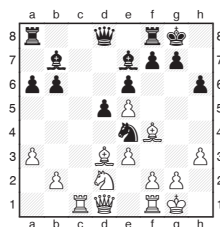
Or 31.Re1xf1 Bb7xe4.

### 31... Qg5-f4+

### 32.Ne4-f2 Rb8-f8

### 33.Qb1-a2 d3-d2

0-1



**G.Kamsky - B.Gundavaa**

FIDE World Rapid  
Khanty-Mansiysk 2013

### 15.Nd2-f3 b6-b5

Black should have tried

15...Ra8-c8.

### 16.Nf3-d4 Qd8-b6

16...Ra8-c8 still looks better.

### 17.Qd1-g4 Kg8-h8

### 18.f2-f3 Ne4-c5

Now Black has very serious problems, as can be seen

by 18...Be7-c5 19.Rc1xc5

Ne4xc5 20.Bf4xh6 g7xh6

21.Qg4-h4 f7-f5 22.e5xf6.

### 19.Bd3-b1

There is no way to transfer defenders to the kingside in time to prevent a decisive breakthrough.

### 19... Nc5-d7

### 20.Qg4-h5 Kh8-g8

### 21.Bf4xh6 g7xh6

### 22.Qh5xh6 f7-f5

### 23.Nd4xe6 Kg8-f7

24.Bb1xf5

Black resigned, as

24...Kf7-e8 25.Qh6-h5+ Rf8-f7

26.Ne6-g7+ is deadly.