

**Michael Adams**



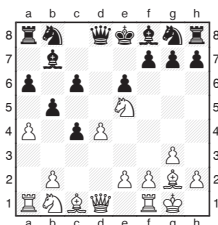
## Net result for Davies

Like many other English players, Nigel Davies has shifted his focus from his playing career to spending more time teaching and writing about the game in his role as founder and owner of the innovative chessimprover.com website. Nigel has always been fond of fianchettoing his king's bishop in the opening stages of the game, a strategy that is always easy on the eye when the bishop rules the roost, as in the first two games below.

c2 e4-e3 is also fatal.

**18...** **Rf3xc3+**  
**19.Kc1-b1**  
 19.b2xc3 Bg7xc3 20.Qd2-c2 Qa5-a3+ 21.Kc1-b1 Bc8-f5 leaves White with no decent moves.

**19...** **e4-e3**  
**20.f2xe3** **Bc8-f5+**  
**21.Kb1-a1** **Rc3-c2**  
 White resigned, as 22.Qd2xa5 Bg7xb2+ 23.Ka1-b1 Rc2-d2+ is mate next turn.



**N. Davies - A. Dunnington**  
 Owens Corning Wrexham, 1996

**8...** **f7-f6**  
 Black's position is already difficult as 8...Bf8-d6 is well met by 9.Nb1-c3.

**9.Ne5-g4** **h7-h5**  
 Black can ill afford more pawn moves developing a piece with 9...Ng8-e7 was indicated.

**10.Ng4-e3** **h5-h4**  
 Opening the 'h' line is more than a tad optimistic.

**11.b2-b3**  
 Eroding Black's pawn mass and clearing lines catches the Black pieces slumbering.

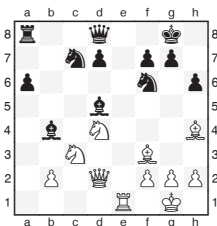
**11...** **h4xg3**  
**12.h2xg3** **c4xb3**  
**13.Qd1xb3** **Ke8-f7**  
**14.Nb1-c3** **Nb8-d7**  
 14...Ng8-e7 still looks a better choice, planning to put the knight on d5.

**15.Nc3-e4** **Ra8-b8**  
 It is already difficult to suggest a sensible move. 15...Ng8-h6 is most effectively met with

16.f2-f4.  
**16.a4xb5** **Bb7-c8**  
 After this the knights jump in but 16...c6xb5 17.d4-d5 or 16...a6xb5 17.f2-f4 are rather grim.

**17.Ne3-c4** **a6xb5**  
**18.Nc4-d6+** **Bf8xd6**  
**19.Ne4xd6+** **Kf7-f8**  
 There is nowhere for the king to hide now the bishop joins the action to slice Black apart on the dark squares.

**20.Bc1-a3** **c6-c5**  
**21.d4xc5** **Nd7-e5**  
**22.c5-c6** **Ng8-e7**  
**23.Rf1-c1**  
**1-0**



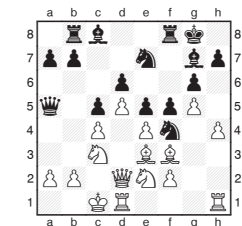
**N. Davies - A. Baburin**  
 4NCL Birmingham 2000

**20.Nd4-f5**  
 A very strong move: as well as posting the knight to an ideal post the 'g' file is forced open for later use by White's rook.

**20...** **Bd5xf3**  
**21.g2xf3** **Nc7-d5**  
 Black had to walk a tightrope with the precise defence 21...Nc7-e6 22.Kg1-h1 Bb4-f8 23.Re1-g1 Kg8-h8 24.Nc3-d5 g7-g5.

**22.Kg1-h1** **Nd5xc3**  
 The only way to survive for a while was 22...Qd8-f8 23.Re1-g1 g7-g6 24.Qd2-d4 Bb4xc3 25.b2xc3. Baburin probably assumed the knight must be recaptured.

**23.Re1-g1** **g7-g6**  
**24.Qd2xh6**  
 Black resigned, as 24...Qd8-f8 25.Rg1xg6+f7xg6 26.Qh6xg6+ Kg8-h8 27.Bh4xf6+ wins.



**D. Polajzer - N. Davies**  
 World Team Under 26 Graz 1981

**15.Ne2xf4**  
 The position remains complex after 15.Kc1-b1, White will greatly regret opening the bishop's diagonal, after which all Black's pieces come to life.

**15...** **e5xf4**  
**16.Be3xf4** **f5xe4**  
**17.Bf4xd6**  
 17.Bf3-e2 Bg7xc3 18.b2xc3 Rf8xf4 19.Qd2xf4 Qa5xc3+ 20.Kc1-b1 e4-e3 also isn't too healthy but the game move leads to a very sticky end.

**17...** **Rf8xf3**  
**18.Bd6xb8**  
 18.Bd6xe7 Rf3xc3+ 19.b2xc3 Bg7xc3 20.Qd2-