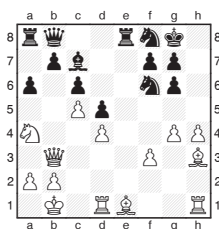


Michael Adams



Win makes it a happy Bunnratty

Mark Hebden clearly felt at home at the Bunnratty Castle Hotel, and played impressively controlled chess despite the breakneck schedule to win the all-play-all Bunnratty Classic.



M. Hebden - A. Astaneh Lopez
Bunnratty Classic 2013

21.g4-g5 Nf6-d7
It was much more practical to play 21...Nf6-h5, preventing White from opening lines on the kingside immediately.
22.h4-h5 g6xh5
23.Bh3xd7 Nf8xd7
24.Rh1xh5 g7-g6
25.Rh5-h1 Bc7-f4
26.Be1-d2 Ra8-a7

After this the rook is stranded far from the action. The variation 26...Bf4xd2 27.Rd1xd2 Qb8-c7 28.Rd2-h2 Nd7-f8 looks very alarming for Black, but he has some defensive resources. If White goes for the immediate kill with 29.Rh2-h8+ Kg8-g7 30.f3-f4 Qc7xf4 31.Qb3-h3 Qf4-e4+ the tables are turned.

27.Qb3-d3
Mark calmly transfers his major pieces to the kingside when weight of forces will have their say.
27... Bf4xd2

28.Qd3xd2 Kg8-g7

29.Rh1-h6
There was an immediate win with the hard-to-spot 29.Qd2-g2 Qb8-f4 30.Kb1-a1, as the Black knight drops off after 30...Ra7-a8 31.Qg2-h3.

29... Re8-h8

30.Rd1-e1 Qb8-g3

30...Ra7-a8 31.Re1-e7 is deadly.

31.Rh6xh8 Kg7xh8

32.Na4-b6 Nd7-f8

32...Nd7xb6 33.Re1-e8+ Kh8-g7 34.c5xb6 is a bit embarrassing, but the rook on a7 remains an unhappy camper.

33.Re1-e7 Qg3xf3

If 33...Kh8-g8 34.Qd2-e3 is the most precise, as 34...Nf8-e6 35.Re7xe6 f7xe6 36.Qe3xe6+ Kg8-g7 37.Qe6-f6+ Kg7-h7 38.Qf6-f7+ Kh7-h8 39.Qf7-f8+ Kh8-h7 40.Qf8-h6+ picks up another pawn with check.

34.a2-a4

Securing White's monarch before the final assault.

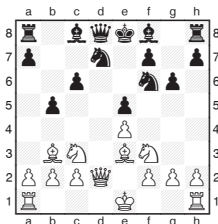
34... a6-a5

35.Qd2-h2+ Kh8-g8

36.Re7-e8 Qf3-f5+

Black resigned before 37.Kb1-a2, leaving Black's pieces completely dominated.

A good time was had by all, as usual, including non-playing surprise guest Veselin Topalov, at the traditional weekend event thanks to generous support from Gary O'Grady of Blackthorne International Transport. My quick win here in round five sewed up tournament victory.



M. Adams - J. Aguera Naredo
Bunnratty Masters 2013

9... Bf8-b4

Black has a tricky position to navigate. I was expecting 9...h7-h6 when a key variation runs 10.Bb3xf7+ Ke8xf7 11.Nf3xe5+ Kf7-g7 12.Be3xh6+ (I was mainly thinking about 12.Ne5xc6 Qd8-e8, which is less clear) 12...Rh8xh6 13.Qd2xh6+ Kg7xh6 14.Ne5-f7+ Kh6-h7 15.Nf7xd8 Nd7-e5, although White is a bit better.

10.Be3-h6

10.Nf3-g5 0-0 11.0-0 was also not a bad option, but I was happy to force Black's king to remain in the centre for a little longer.

10... Nf6xe4

11.Qd2-e3 Ne4-d6

11...Ne4xc3 12.b2xc3 Bb4-f8 (12...Bb4-c5 13.Qe3-e4 is very difficult for Black) 13.Nf3xe5 limits the damage.

12.Nf3xe5 Nd7xe5

13.Qe3xe5+

I failed to calculate the most efficient 13.Bh6-g7 f7-f6 14.Bg7xh8 Ke8-d7 15.0-0-0 Qd8xh8 16.Qe3-d4.

13... Qd8-e7

14.Bh6-g7 Rh8-g8

I thought 14...Qe7xe5+ 15.Bg7xe5 0-0 16.0-0-0 was very strong, but 16...Nd6-b7 17.Nc3-e4 Bb4-e7 gives chances to defend.

15.0-0-0 Qe7xe5

16.Bg7xe5 Nd6-c4

17.Bb3xc4 b5xc4

There aren't any better options 17...Bb4xc3 18.Be5xc3 b5xc4 19.Bc3-f6 Bc8-e6 20.Rd1-d6 is no fun.

18.Nc3-e4 Ke8-e7

19.c2-c3 Bb4-a5

20.Be5-f6+

20.Rh1-e1 was even better.

20... Ke7-e6

20...Ke7-f8 21.Rh1-e1 would have prolonged the game.

21.Rd1-d6+ Ke6-f5

22.Ne4-g3+

and Black resigned, as 23.Rd6-d4 mate will be my next move.