

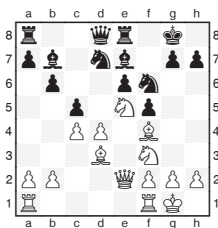
**Michael Adams**



## Aronian's Alekhine favourite

It was a pleasure to play in the Alekhine Memorial, held in style at the Louvre in Paris and the Russian Museum in St Petersburg. One nice touch was the players annotating a favourite game by the former world champion for the programme; more details at [alekhine-memorial.com/alekhin](http://alekhine-memorial.com/alekhin). The selection of tournament winner Levon Aronian is below:

Ding Liren chose this beautiful finish from a simultaneous display.



**A. Alekhine - Feldt**  
Odessa Simul 1916

### 15.Ne5-f7

It would be natural to capture a pawn on this square, but the leap into thin air is even more attractive to the eye.

**15...** **Kg8xf7**  
**16.Qe2xe6+** **Kf7-g6**

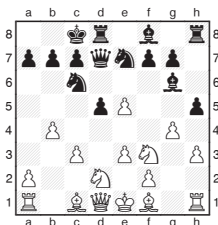
There are no good options, as 16...Kf7xe6 17.Nf3-g5 is mate, and 16...Kf7-f8 17.Nf3-g5 is decisive.

### 17.g2-g4

This quiet move leads to the quickest mate, setting up twin threats of 17.Bd3xf5 mate, which Black prevents, and another threat he can't stop at the same time.

**17...** **Bb7-e4**  
**18.Nf3-h4 mate.**

Laurent Fressinet won the special prize for the best game in the style of Alekhine. It is rare you see Vladimir Kramnik so convincingly demolished with the black pieces.



**V. Kramnik - L. Fressinet**  
Alekhine Memorial 2013

### 11.b4-b5

White's opening has not

been a success, but 11.Rh1-g1 h5xg4 12.h3xg4 would have limited the damage.

**11...** **h5xg4**  
Ignoring the threatened knight enables Black to dominate proceedings.

**12.b5xc6** **Ne7xc6**  
**13.e5-e6**  
13.Nf3-d4 Nc6xe5 is also bad.

**13...** **Qd7xe6**  
**14.Nf3-d4** **Nc6xd4**  
**15.c3xd4** **Bf8-e7**  
**16.Bf1-g2** **g4xh3**  
**17.Bg2-f3** **Bg6-f5**

With three pawns for the piece, material is balanced, but White's king is in trouble, whilst Black's is secure.

**18.Qd1-a4** **Kc8-b8**  
**19.Bc1-a3** **Be7-h4**

An excellent decision. The bishop will prove a thorn in White's side on this diagonal for the moment, threatening 20...Qe6xe3+.

**20.Nd2-f1** **g7-g5**  
**21.Rh1-h2** **g5-g4**  
**22.Bf3-e2** **Bf5-e4**  
**23.Ra1-c1** **Be4-g2**  
**24.Qa4-a5**

Retreating with 24.Qa4-c2 was a little better.

**24...** **Rd8-c8**  
Very solid, preventing any hopes for counterplay.

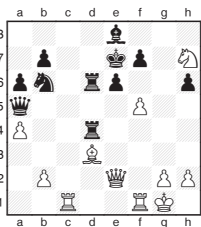
**25.Rc1-c3** **Bh4xf2+**  
The decisive breakthrough.

**26.Ke1xf2** **Bg2xf1**  
**27.Kf2xf1**

If 27.Be2xf1 g4-g3+ 28.Kf2xg3 Qe6-f5 White's king is stranded, but now the passers can't be denied.

**27...** **g4-g3**  
**28.Be2-f3** **g3xh2**  
**29.Kf1-e2** **Rh8-g8**  
**30.Ba3-c5** **a7-a6**  
**31.Bf3-h1** **Rg8-g2+**  
**32.Bh1xg2**

And White resigned, as 32...h3xg2 is not very promising.



**A. Alekhine - G. Maroczy**  
Bled 1931

### 25.b2-b4

This fine deflection allows White's queen to infiltrate.

**25...** **Qa5xb4**  
After 25...Rd4xb4 26.Qe2-e3 is good.

**26.Qe2-e5** **Nb6-d7**  
26...Rd4xd3 27.Qe5-f6+

Ke7-d7 28.Nh7-f8 mate is a pretty finish.

**27.Qe5-h8** **Rd4xd3**

Black remains in trouble after 27...Rd6-c6 28.Rc1xc6 b7xc6 29.f5xe6 f7xe6 30.Nh7-f6, but now there is an abrupt conclusion.

### 28.f5-f6+

Black resigned, as 28...Ke7-d8 29.Qh8xe8+ Kd8xe8 30.Rc1-c8 is mate.