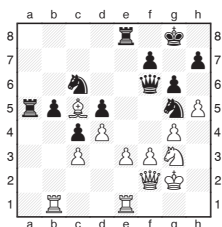


Michael Adams



Battlefields of Europe

No competition demonstrates the ever-expanding number of strong players better than the European Individual Championship, in which this year 80 participants had ratings of 2600 or above.



A. Timofeev - Z. Almasi
European Championship
Legnica 2013

27.h5xg6

White is in good shape after 27.e3-e4 opening the 'h' line proves an unfortunate decision.

27... h7xg6
28.e3-e4 Ra5-a2

This deflection undoubtedly came as a shock but no serious damage has been done yet.

29.Qf2xa2

If 29.Re1-e2 Ra2xe2

30.Qf2xe2 Ng5-e6 is strong.

29... Qf6xf3+

30.Kg2-h2 Kg8-g7

This move bringing his rook into the attack would not have been possible without the exchange of pawns.

31.Re1-f1

White panics, 31.Qa2-g2

Re8-h8+ 32.Ng3-h5+ g6xh5

33.Qg2xf3 Ng5xf3+ 34.Kh2-g3

Nf3xe1 35.Rb1xe1 is likely to be a draw.

31... Qf3xg4

32.Qa2-f2

Relatively best was 32.Bc5-d6

Ng5xe4 33.Qa2-g2 Re8-h8+

34.Kh2-g1 Ne4xd6.

32...

33.Kh2-g1

34.Kg1-g2

35.Rf1xf2

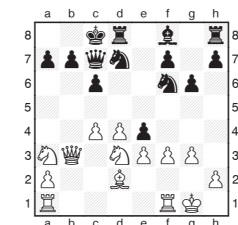
0-1

Re8-h8+

Ng5-h3+

Nh3xf2

Qg4-h3+



M. Rodshtein -

I. Nepomniachtchi

European Championship

Legnica 2013

17.Nd3-f2

The simpler 17.f3xe4

Nf6xe4 18.Bd2-e1 was

better.

17... e4xf3

18.Rf1-b1

Matters are not that clear

after 18.e3-e4 Nd7-c5

19.Qb3xf3 Nc5xe4 20.Bd2-f4.

18... Bf8-d6

19.Kg1-f1 Bd6xg3

Rodshtein would have

clearly considered this

possibility, but probably

thought recapturing was

fine as 20.h2xg3 Qc7xg3

21.Qb3xb7 is mate.

However, he now realised

the unexpected leap

20...Nd7-c5 is deadly. After

21.d4xc5 (21.Qb3-b4

Qc7xg3 leaves the king

to its fate) 21...Rd8xd2

White's scattered forces are

powerless e.g. 22.Rb1-b2

Rd2xb2 23.Qb3xb2

Qc7xg3 24.Nf2-h1 Qg3-h4

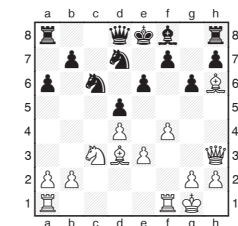
25.Kf1-g1 Rh8-d8.

20.Bd2-a5 b7-b6

21.c4-c5 Bg3xf2

22.Qb3-c4 Qc7xh2

0-1



H. Melkumyan -

C. Balogh

European Championship

Legnica 2013

17.Bh6xf8

After 17...Ke8xf8 18.f4-f5

g6xf5 19.Bd3xf5 e6xf5

20.Qh3xf5 f7-f6 21.Nc3xd5

looks rather worrying.

18.e3-e4 d5xe4

19.Bd3xe4 Nf8-d7

It's understandable that

Black wanted to keep lines

closed and remove his

knight from the back rank,

but snatching the pawn

with 19...Qd8xd4+

20.Kg1-h1 Qd4-b6 was a

better bet here.

20.d4-d5 e6xd5

21.Nc3xd5

The knight dominates

proceedings from the centre

of the board.

21... Qd8-a5

Black is unable to castle,

this is because of 21...0-0

22.Qh3xd7.

22.Ra1-c1

Preventing Black's king from

fleeing to the other side.

22... Ra8-d8

23.b2-b4 Qa5xa2

23...Nc6xb4 can be met by

the mundane 24.Qh3-c3,

or the much more

spectacular 24.Be4xg6

Qa5xd5 25.Rf1-d1 Qd5xa2

26.Rd1-d2 Qa2xd2

27.Qh3-e6+ Ke8-f8

28.Qe6xf7 mate.

24.Qh3-c3

24.Qh3-h6 was more than

good enough, but White

changes his plan and

switches from targeting

Black's king to cornering the

black queen on the other

flank.

24... 0-0

25.Rf1-f2 Qa2-a4

26.Rc1-a1 Qa4-b5

27.Ra1-a5 Nd7-c5

White's last move closes

the show, as 27...Nc6xa5

28.Nd5-e7 is mate.

28.b4xc5 Rd8xd5

28...Qb5xa5 is still met by

29.Nd5-e7+.

29.Ra5xb5 Rd5-d1+

30.Rf2-f1 1-0