

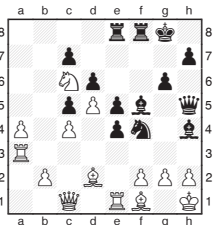
Michael Adams



Jones the star of a so-so show

The first six games of the World Championship match have proved an anticlimax. After three uneventful draws, a fascinating battle in game four was also drawn. In the next two games, Magnus Carlsen obtained the small endgame advantages with which he is so effective and exerted maximum pressure. Despite this, given the little material remaining, it was a big surprise that Viswanathan Anand was unable to hold either game. More about this next week.

At the same time, the European Team Championships have been taking place: England sent their strongest possible Open Team, but we didn't quite fire, despite a creditable early draw with Russia. Gawain Jones was the star of that match and had some other good moments:



N. Nikcevic - G. Jones
European Teams, Warsaw 2013

White has a handy passed pawn on the queenside, but the mass of Black pieces on the kingside are a more relevant detail.

27.Bd2-e3 **Nf4-d3**
28.Bf1xd3 **e4xd3**

29.Qc1-d1
29.a4-a5 Bf5-e4 is strong.
29... **Bf5-g4**
30.Qd1xd3 **Bh4xf2**
31.Be3xf2 **Rf8xf2**
32.a4-a5

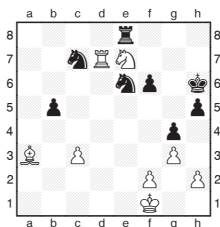
32.Re1-g1 Re8-f8 33.Qd3-g3 was a slightly better chance.

32... **Re8-f8**
33.Ra3-a1

33.Re1-g1 Bg4-f3 or 33.a5-a6 Bg4-e2 are decisive.

33... **Rf2xg2**
34.Kh1xg2 **Bg4-f3+**

White resigned, as 35.Kg2-g1 Qh5-g5+ 36.Kg1-f2 Bf3-d1+ 37.Qd3-f3 Rf8xf3 is mate.

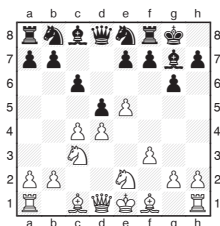


R. Mamedov - V. Petkov
European Teams, Warsaw 2013

42... **Re8-d8**
Black could have hung on with 42...Re8-a8 43.Ba3-c1+ Kh6-h7.

43.Ne7-f5+ **Kh6-g5**
44.Nf5-h4

Black resigned, as 44...Rd8xd7 45.Ba3-c1+ leads to an unusual mating pattern. 44...f6-f5 45.Ba3-e7+ or 44...Kg5-h6 45.Ba3-c1+ win material.



I. Ivanisevic - I. Saric
European Teams, Warsaw 2013

8.h2-h4
Ivanisevic uses his strong central control to open up Black's kingside.

8... **d5xc4**
9.h4-h5 **c6-c5**
10.h5xg6 **f7xg6**

It's understandable that Black didn't like the open file after 10...h7xg6, but it was a better option, as now White gets turbocharged development.

11.Ne2-f4 **e7-e6**
12.Bf1xc4 **Ne8-c7**
13.Qd1-c2

Another good option was 13.d4-d5, opening up the light squares, but White chooses a more direct approach.

13... **Qd8xd4**

The alternative 13...c5xd4 is also extremely dangerous. One sample line goes: 14.Nf4xg6 h7xg6 15.Qc2xg6 d4xc3 16.Qg6-h7+ Kg8-f7 17.Bc1-h6 Nc7-e8 18.Rh1-h5 Qd8-d4 19.Rh5-f5+ Kf7-e7 20.Bh6-g5+ Ke7-d7 21.Rf5xf8 and Black's king remains a hunted man.

14.Nc3-e2 **Qd4xe5**
15.Rh1xh7 **Kg8xh7**
16.Nf4xg6 **Qe5-h2**

The wrong direction. 16...Qe5-f6 17.Ng6xf8+ Kh7-g8 is much stronger. Now Black's king cuts a lonely figure.

17.Ng6xf8+ **Kh7-g8**
18.Bc1-f4 **Qh2xg2**

Black probably intended 18...Qh2-h1+ 19.Ke1-f2 Qh1xa1, but White can force mate with 20.Qc2-h7+ Kg8xf8 21.Bf4-d6+ Kf8-f7 22.Bc4-d3 Qa1xb2 23.Qh7-h5+ Kf7-g8 24.Bd3-h7+ Kg8-h8 25.Bh7-g6+ Kh8-g8 26.Qh5-h7.

19.O-O-O **Kg8xf8**
20.Bf4xc7

The colossal lead in development can't be denied for long.

20... **Nb8-c6**
21.Rd1-g1 **Qg2xf3**
22.Bc7-d6+ **Kf8-g8**
23.Qc2-g6 **Qf3-f7**
24.Qg6-g5 **Bc8-d7**
25.Ne2-f4 **Nc6-d4**
or 25...Ra8-e8 26.Nf4-h5.
26.Bd6-e5 **Nd4-f5**
27.Nf4-h5
1-O