

Michael Adams



Juniors on alert for 14-year-old

Wei Yi was one of the stars of the recent World Cup. The 14-year-old defeated Ian Nepomniachtchi and Alexei Shirov in fine style before being eliminated in a close match against Shakhriyar Mamedyarov.

He found things a little tougher at the World Junior Championships, where his opponents were forewarned, but he still emerged undefeated, with five wins and eight draws, finishing two points behind the winner, his countryman Yu Yangyi.

12.Bc4xe6 keeps good compensation.

10.Ng5xe6 **Bd5xe6**
11.Bc4xe6 **Bf8-d6**
12.O-O **Ng8-f6**
13.Qd1-f3

A bit slow 13.Rf1-e1, or 13.c2-c4 were more to the point.

13... **c7-c6**
14.Rf1-e1 **Qd8-a5**

A clever idea, opening a path for his king to run to the relative safety of the queenside.

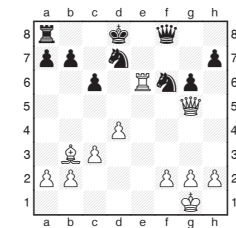
15.Bc1-f4 **Bd6xf4**
16.Qf3xf4 **Ke8-d8**
17.Qf4-g3 **g7-g6**
18.c2-c3

The other option was 18.Re1-e3. There aren't many targets in the Black position, but untangling his pieces is an ongoing problem.

18... **Rh8-e8**
19.Be6-f7 **Re8-e7**
20.Bf7-b3 **Re7xe1+**
21.Ra1xe1 **Qa5-c7**

Although some pieces have been exchanged, the initiative persists.

22.Qg3-g5 **Qc7-d6**
23.Re1-e6 **Qd6-f8**



24.c3-c4

Gaining more space and, when the pawn nudges another square forward, more influence on the dark squares.

24... **Ra8-c8**
 24...a7-a5 was a more active possibility.
25.c4-c5 **Rc8-c7**
26.h2-h3

If White tries to advance his queenside pawns 26.Bb3-c4 Kd8-c8 27.b2-b4 Qf8-d8 regroups effectively.

26... **Kd8-c8**
27.Qg5-e3 **Kc8-b8**
28.Re6-e7 **Rc7-c8**

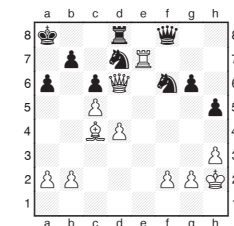
29.Re7-f7 **Qf8-e8**
30.Bb3-e6 **Rc8-d8**
31.Qe3-f4+ **Kb8-a8**

Black's king finally finds safety, but his other pieces remain passive.

32.Qf4-c7 **a7-a6**
33.Kg1-h2 **h7-h5**

It was more practical to clarify the position with 33...Qe8xe6, as after 34.Qc7xd8+ Ka8-a7 35.Rf7-e7.Qe6-d5, Black is doing fine. So White should settle for 35.Rf7xf6 Nd7xf6 36.Qd8-b6+ with perpetual.

34.Be6-c4 **Rd8-c8**
35.Qc7-d6 **Rc8-d8**
36.Qd6-c7 **Rd8-c8**
37.Qc7-d6 **Rc8-d8**
38.Rf7-e7 **Qe8-f8**



39.Bc4xa6 **Nf6-e8**

Finally Black cracks. The correct 39...Rd8-e8 40.Re7xe8+ Qf8xe8 41.Ba6-d3 Qe8-e1 remains around equal.

40.Ba6xb7+ **Ka8-a7**
 40...Ka8xb7 41.Re7xd7+ Rd8xd7 42.Qd6xf8 wins the queen.

41.Qd6xc6 **Qf8xe7**

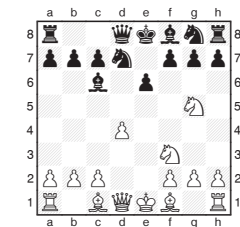
After this, Black gets marmalised on the light squares 41...Qf8-f4+ 42.g2-g3 Qf4xf2+ 43.Qc6-g2 Qf2xd4 44.c5-c6 Nd7-c5 45.c6-c7 Ne8xc7 46.Re7xc7 Ka7-b8 still gave chances to resist.

42.Qc6-a6+ **Ka7-b8**
43.Bb7-f3

Despite Black's large army, there is nothing to be done.

43... **Nd7xc5**
44.Qa6-a8+ **Kb8-c7**
45.Qa8-a7+ **Kc7-d6**
46.Qa7-b6+

Black resigned due to 46...Kd6-d7 47.Qb6-c6 mate.



Wei Yi - C. Emiroglu
 World Juniors Kocaeli 2013

7.Ng5xf7

Very direct. White gives up a piece to strand Black's king in the centre for some time to come, as castling is now off the agenda.

7... **Ke8xf7**
8.Nf3-g5+ **Kf7-e8**
9.Bf1-c4 **Bc6-d5**

Taking the pawn is also possible: 9...Bc6xg2 10.Bc4xe6 Bg2xh1 11.Be6-f7+ Ke8-e7 12.Qd1-e2+ soon leads to mate, but 10...Qd8-e7 is much stronger. Alternatively, 10.Rh1-g1 Bg2-d5 11.Ng5xe6 Bd5xe6