

Michael Adams

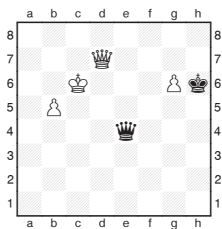


Timman still sharp at 60

One of the highlights of this year's Tata Steel tournament in Wijk aan Zee has been seeing Jan Timman participating again, now in the second group. Many 60 year-olds would have settled for an easy life in the commentary room, but Jan has retained his great enthusiasm and has already produced two fine games in the opening six rounds.

Timman's endgame technique has always been a strong point due to his intensive study of that aspect of the game, as well as his keen interest in composed studies.

Here he shows no sign of fatigue when smoothly finishing off his 15-year-old opponent.



J. Timman - I. Nyzhnyk
Tata Steel 2012

86.Kc6-c7 **Qe4-e5+**
87.Kc7-c8

Jan limits the checking possibilities by heading to the edge of the board.

87... **Qe5-e3**

White avoids capturing the pawn as it gives his king some cover 87...Kh6xg6 88.b5-b6 Qe5-c5+ 89.Kc8-b7 is a technical win.

88.Qd7-c6 **Qe3-h3+**
89.Kc8-b7 **Qh3-e3**

90.b5-b6 **Qe3-e7+**
91.Kb7-c8 **Qe7-f8+**
92.Kc8-d7

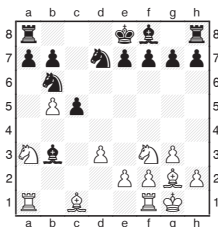
Surprisingly, Timman sends his king back into the centre of the board, creating a beautiful finish.

92... **Qf8-g7+**
93.Kd7-e6 **Qg7-g8+**
94.Ke6-e5 **Qg8-b8+**
95.Qc6-d6 **Qb8-e8+**
95...Qb8-a8 would have hung on a bit longer.

96.Ke5-f6 **Qe8-h8+**
96...Qe8xg6+ 97.Kf6-e5 exchanges queens.

97.g6-g7
Black resigned as 97...Qh8xg7+ 98.Kf6-f5+ Kh6-h7 99.Qd6-c7 again simplifies decisively.

In the next game the queens have been swapped early on, but this doesn't ease Black's difficulties caused by his lagging development. Timman takes full advantage, playing with great energy, making threats with every move and allowing Black no respite.



J. Timman - S. Ernst
Tata Steel 2012

14.Nf3-d2 **Bb3-d5**
15.e2-e4 **Bd5-e6**
16.f2-f4 **f7-f6**

The threat to trap the bishop is not easy to counter. Although this move looks reasonable, after it there seems to be no good defence. 16...g7-g6 looks a better try.

17.e4-e5 **Be6-d5**
18.e5-e6 **Bd5xe6**
The pawn must be removed,

as 18...Nd7-b8 19.Na3-c4 is terminal.

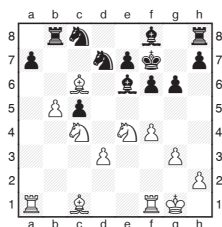
19.Bg2xb7 **Ra8-b8**
20.Bb7-c6

The bishop is very powerful here.

20... **g7-g6**
21.Na3-c4 **Nb6-c8**

22.Nd2-e4
White's pieces effortlessly slide onto super squares.

22... **Ke8-f7**



23.Nc4-e5+

This tactic opens things up before Black can get organised.

23... **Nd7xe5**

23...f6xe5 24.Ne4-g5+ Kf7-f6 25.f4xe5+ Kf6xe5 26.Rf1-e1+ is even worse but now the pressure is ramped up on both sides of the board.

24.f4xe5 **Be6-f5**
25.Ne4xc5 **Bf8-g7**
26.d3-d4

26.Rf1xf5 g6xf5 27.e5-e6+ Kf7-g6 28.Nc5-d7 was already good.

26... **Rh8-d8**
27.Rf1xf5 **g6xf5**
28.e5-e6+ **Kf7-g6**
29.Nc5-d7 **Nc8-d6**
30.Nd7xb8 **Rd8xb8**

31.Ra1xa7
The final developing move 31.Bc1-f4 also wasn't bad.

31... **Nd6xb5**
32.Ra7xe7 **Bg7-h6**

Or 32...Nb5xd4 33.Bc6-e8+.

33.Bc6-e8+
Black resigned, as 33...Rb8xe8 34.Re7xe8 Bh6xc1 35.Re8-g8+ Kg6-h5 36.e6-e7 wins easily.